

Suite 1 for Cello Solo

JOHANN SEBASTIAN BACH
BWV 1007

Prélude

3

6

9

12

15

18

21

24

27

30



33

36

39

This section contains five staves of musical notation in bass clef with a key signature of one sharp (F#). The first staff (measures 30-32) features a melodic line with slurs and a descending eighth-note pattern. The second staff (measures 33-35) continues with a similar eighth-note pattern. The third staff (measures 36-38) includes some chromatic alterations, such as a flat and a sharp. The fourth staff (measures 39-41) shows a more complex rhythmic pattern with slurs. The fifth staff (measures 42-44) concludes with a final melodic phrase.

Allemande



3

6

9

12

15

18

This section contains seven staves of musical notation in bass clef with a key signature of one sharp (F#). The first staff (measures 1-2) begins with a melodic phrase. The second staff (measures 3-5) features a rhythmic pattern of eighth notes. The third staff (measures 6-8) continues with eighth-note patterns and includes a sharp sign. The fourth staff (measures 9-11) shows a similar rhythmic pattern. The fifth staff (measures 12-14) includes a repeat sign and a double bar line. The sixth staff (measures 15-17) features a melodic phrase with a sharp sign. The seventh staff (measures 18-20) concludes with a melodic phrase and a trill (tr) marking.

21



24

27

30

Detailed description: This block contains six staves of musical notation in bass clef with a key signature of one sharp (F#). The first staff (measures 21-23) includes a dynamic marking of *trp.* at the end. The second staff (measures 24-26) continues the melodic line. The third staff (measures 27-29) features a key signature change to one flat (Bb) for the final measure. The fourth staff (measures 30-31) concludes the piece with a double bar line and repeat dots.

Courante



4

7

11

14

17

21

Detailed description: This section, titled 'Courante', consists of seven staves of musical notation in bass clef with a key signature of one sharp (F#) and a 3/4 time signature. The first staff (measures 1-3) begins the piece. The second staff (measures 4-6) continues the melody. The third staff (measures 7-10) includes a key signature change to one flat (Bb) for the final measure. The fourth staff (measures 11-13) continues the piece. The fifth staff (measures 14-16) features a key signature change to one sharp (F#) for the final measure. The sixth staff (measures 17-20) includes a repeat sign and a fermata. The seventh staff (measures 21-23) concludes the piece.

25

29

33

36

39

This block contains five staves of musical notation in bass clef, key of D major, and 3/4 time. The first staff (measures 25-28) features a complex melodic line with many slurs and ties. The second staff (measures 29-32) continues this melodic development. The third staff (measures 33-35) shows a similar pattern of slurs and ties. The fourth staff (measures 36-38) consists of eighth-note patterns with slurs. The fifth staff (measures 39-41) concludes the section with a final melodic phrase and a double bar line.

Sarabande

1

5

9

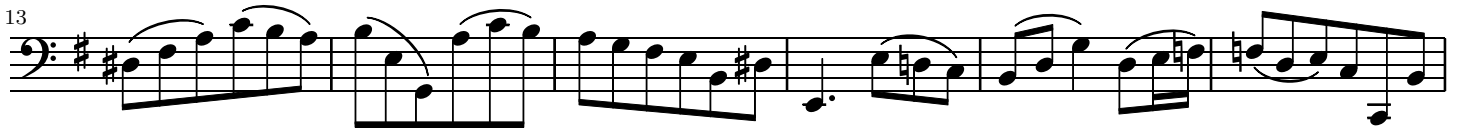
13

This block contains four staves of musical notation in bass clef, key of D major, and 3/4 time. The first staff (measures 1-4) includes a trill (tr) in measure 3. The second staff (measures 5-8) features a series of eighth-note patterns with slurs. The third staff (measures 9-12) continues with similar eighth-note patterns. The fourth staff (measures 13-16) concludes the section with a final melodic phrase and a double bar line.

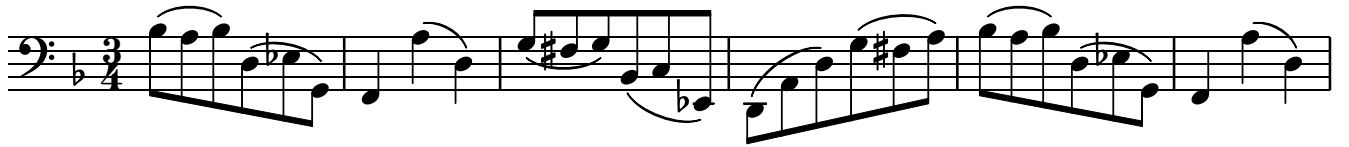
Menuet 1

1

This block contains one staff of musical notation in bass clef, key of D major, and 3/4 time. The first staff (measures 1-4) includes a trill (tr) in measure 3. The piece concludes with a double bar line.



Menuet 2



Gigue



