

THE VOICE WITHIN

Words and Music by CHRISTINA AGUILERA
and GLEN BALLARD

Slowly



Young girl, don't cry; _ I'll be _
Young girl, don't hide; _ you'll nev -

mp

With pedal



_ right here _ when your _ world starts to fall. _____
_ er change _ if you _ just run a - way. _____

Ooh. _____
Ooh. _____



Young girl. it's al - right; _ your tears _ will dry, _ you'll soon be free to
Young girl, just hold tight; _ soon _ you're gon - na see your bright - er



3 fr.



fly. _____ Ooh. _____ When you're
 day. _____ Ooh. _____ Now, in a

Em



D/C



C



Gsus2



Dsus



safe in - side your room, you — tend to dream of a
 world where in - no - cence is — quick - ly claimed, it's so

Em



D/C



C



Gsus2



Dsus



place where noth - ing's hard - er — than it seems. No one
 hard to stand your ground when you're - so a - fraid; no one

Em



D/C



C



G/B



Dsus



ev - er wants or both - ers — to ex - plain of the
 reach - es out a hand for — you to hold. When you

Em



D/C



C



Am



D7sus



heart - ache life can bring and what it means. When there's
look out - side, look in - side - to your soul.



G



Am7(b5)/G



Em/G



G9



A9



no one else, look in - side your-self; like your old - est friend, just



Am7(b5)/Eb



D7sus



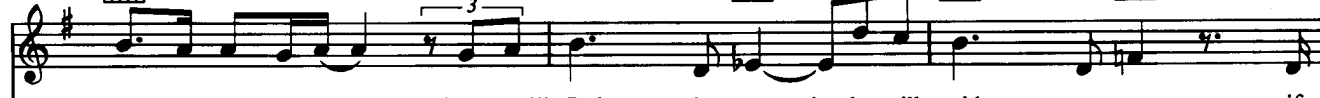
Am7(b5)/G



Em/G



G9



trust the voice with - in Then you'll find the strength that will guide your way if



1.

A9



Am7(b5)/Eb



D7sus



G5



you'll learn to be-gin to trust the voice with - in.



dim.

mp

||2. Am7(b5)/Eb D7sus Em B7/F#

trust the voice with - in

Em/G A7 Em B7/F#

(Ooh, ooh,

p

sim

Em/G A7 Em B7/F#

ooh, ooh.)

Life is a jour - ney; — it can

f

Em/G A7 Em B7/F#

take you an - y where — you choose to go. — As long as you're learn - ing — you'll find

all you'll ev - er need to know. Take it, you'll make it.
(Be strong, hold on. Be

strong; Just don't for-sake it be cause... no one can
hold on.) (No one can tell you what you can't do, no one can

stop you). You know that I'm talk ing to you. When there's no one else, look in -

side your-self, like your old-est friend, just trust the voice with in. Then you'll

A

Bm7(b5)/A

F#m/A

A9

B9



find the strength that will guide _____ your way _ if you'll learn to be-gin _____ to

Bm7b5/F

E7sus

A5



trust the voice with in. _____

mp

Young girl, don't cry; _____ I'll be _____ right here _ when your _ world starts to fall. _

Dsus2

Esus

A(add2)



Ooh, _____ mm. _____

rit.