

MASTER RHYTHM

AS RECORDED BY  
EARTH, WIND & FIRE

ORIG. KEY

"A"

$\text{♩} = 120$

# September

INTRO

(GUIT. OCTAVES)

etc.

(PNO:)

D<sup>7</sup> C<sup>#</sup>m<sup>7</sup> Bm<sup>7</sup> C<sup>#</sup>m<sup>7</sup> F<sup>#</sup>m<sup>7</sup>

H.H. x x x x x x x x

I 2

(HORNS)

(BASS)

D<sup>7</sup> C<sup>#</sup>m<sup>7</sup> Bm<sup>7</sup> C<sup>#</sup>m<sup>7</sup> C<sup>#</sup>7 F<sup>#</sup>m

G<sup>7</sup>/A

H.H. x x x x x x x x

B.D. p 3 p 3

S.N. p 3 4 r 3 4

etc.

VERSE

(GUIT.)

A

D<sup>7</sup> C<sup>#</sup>m<sup>7</sup> Bm<sup>7</sup> C<sup>#</sup>m<sup>7</sup> F<sup>#</sup>m<sup>7</sup>

etc.

HORNS

D<sup>⊙</sup> C#m<sup>7</sup> Bm<sup>7</sup> C#<sup>7</sup> F#<sup>m</sup> G<sup>⊙</sup>/A

A9 HORNS 2nd x

D<sup>⊙</sup> C#m<sup>7</sup> Bm<sup>7</sup> C#m<sup>7</sup> F#m<sup>7</sup>

HORNS 2nd x

D<sup>⊙</sup> C#m<sup>7</sup> Bm<sup>7</sup> C#<sup>7</sup> F#m<sup>7</sup> G<sup>⊙</sup>/A F#<sup>7</sup>/A#

CHORUS B HORNS

Bm<sup>9</sup> E<sup>9</sup> C#m<sup>7</sup> F#m<sup>7</sup>

HORNS

G<sup>⊙</sup>/A

"BA - DOO, BA DOO, ..."

**C**

D<sup>7</sup> C#<sup>m7</sup> B<sup>m7</sup> C#<sup>m7</sup> F#<sup>m7</sup>

**HORNS**

D<sup>7</sup> C#<sup>m7</sup> B<sup>m7</sup> C#<sup>7</sup> F#<sup>m7</sup>

SN.

D.S. al

CODA

**D** <sup>(HNS.)</sup> **4x**

G<sup>7</sup>/A F#<sup>7</sup>/A# B<sup>m9</sup> E<sup>7</sup> C#<sup>m7</sup> F#<sup>m7</sup>

**HORNS**

G<sup>7</sup>/A F#<sup>7</sup>/A#

REPEAT TIL CUE

fine ON CUE

E

HORNS

Handwritten musical notation for Horns, measures 1-4. The notation is on a grand staff with treble and bass clefs. Chords Bm<sup>9</sup>, E<sup>7</sup>, C#m<sup>7</sup>, and F#m<sup>7</sup> are written below the notes. A '2' with a repeat sign is at the end of the first two measures.

Handwritten musical notation for Horns, measures 5-8. The notation is on a grand staff with treble and bass clefs. Chords G<sup>7</sup>/A and a 'fine' instruction are present. A '2' with a repeat sign is at the start of the first measure.

Five sets of empty musical staves.

B $\flat$  HORNS

SEPTEMBER

INTRO

4 I2

VERSE

A 6 8

A9 8

CHORUS

B 2

2

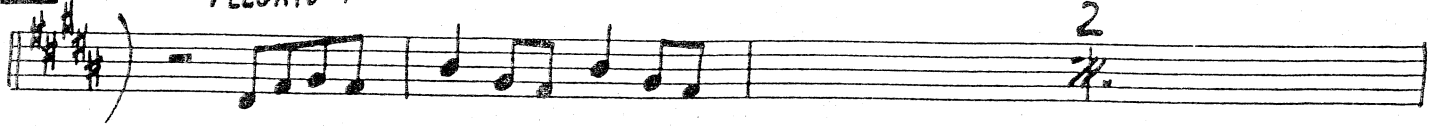
C 6 sim.

VERSE

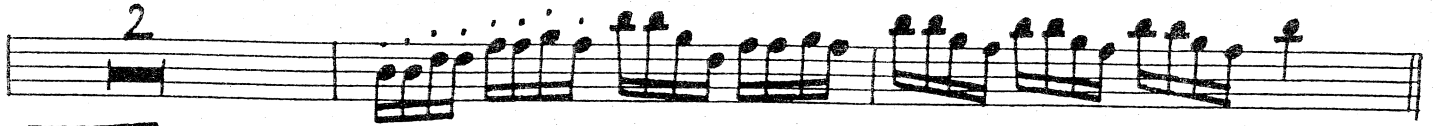
A2 6

A2 9

LEGATO

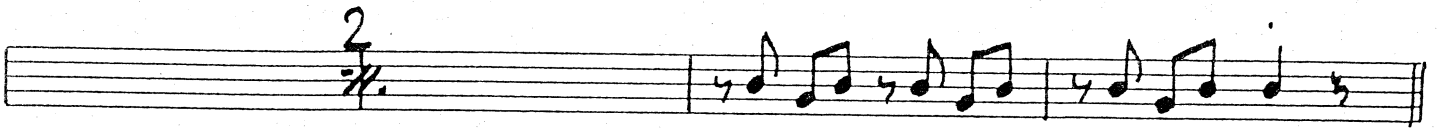
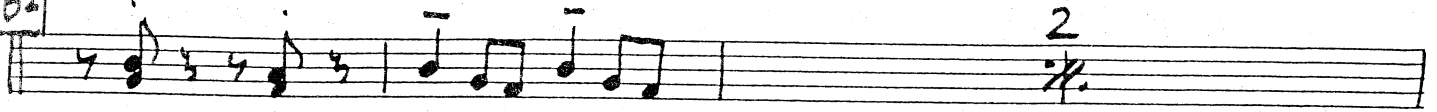


etc.

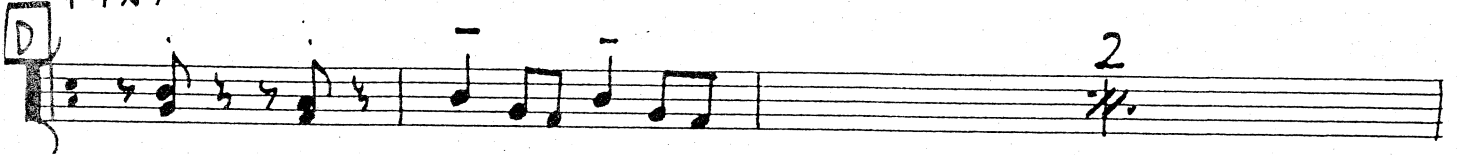


CHORUS

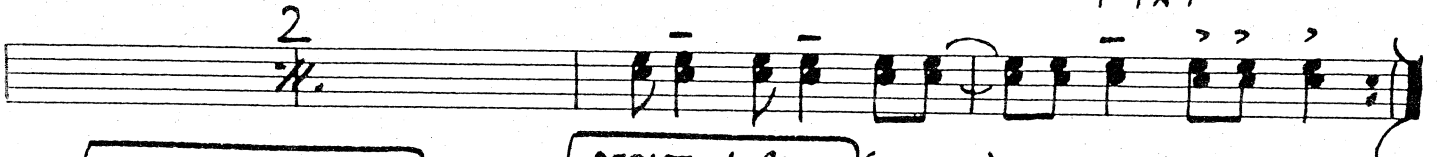
B2



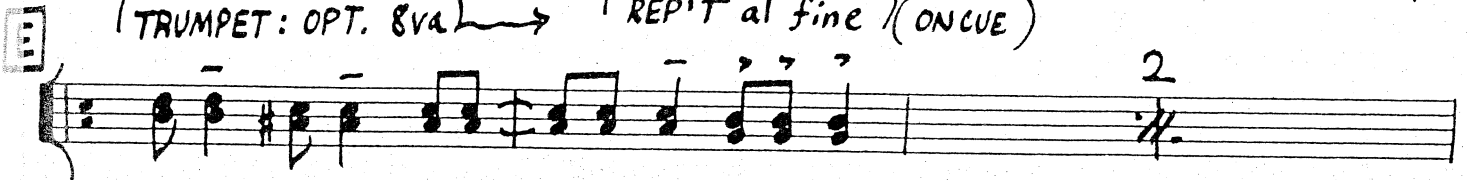
(4x)



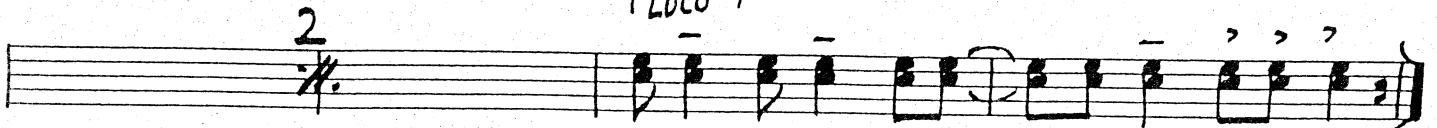
(4x)



TRUMPET: OPT. 8va → REP'T al fine (ONCUE)



LOCO



*fine*

