

# VIVA LA VIDA

Violoncel

Coldplay

Arr.: Sebastià Salvà

$\text{♩} = 139$

*mp*

5

*mf* *mf*

10

15

*mp*

19

*mf*

23

*mf*

27

31

36

41

41 *f*

Measures 41-44: Bass clef, key signature of two sharps (F# and C#). The music consists of a continuous eighth-note pattern. The first two measures are quarter notes, and the last two are eighth notes. The dynamic is *f*.

45

45

Measures 45-48: Continuation of the eighth-note pattern from the previous system.

49

49

Measures 49-52: Continuation of the eighth-note pattern.

53

53 *mp*

Measures 53-57: Continuation of the eighth-note pattern. Measure 53 has a *pizz.* marking. Measures 54 and 56 have *V* markings above them. The dynamic is *mp*.

58

58 *mf*

Measures 58-62: Continuation of the eighth-note pattern. The dynamic is *mf*.

63

63 *mf*

Measures 63-67: Continuation of the eighth-note pattern. The dynamic is *mf*.

68

68

Measures 68-72: Continuation of the eighth-note pattern.

73

73 *arco*

Measures 73-76: Continuation of the eighth-note pattern. Measure 73 has an *arco* marking. Measures 74, 75, and 76 have *V* markings above them.

77

77

Measures 77-80: Continuation of the eighth-note pattern. Measures 78, 79, and 80 have *V* markings above them.

81

81 *f*

Measures 81-84: Continuation of the eighth-note pattern. The dynamic is *f*.

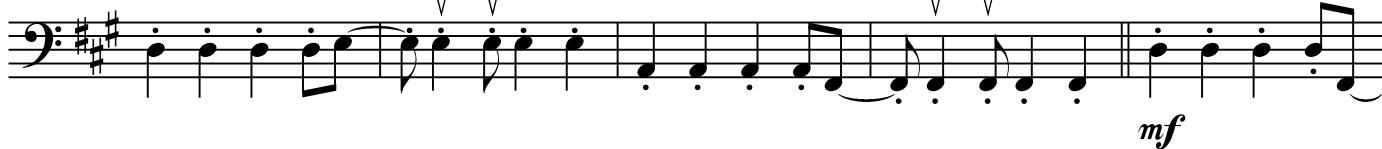
85



89



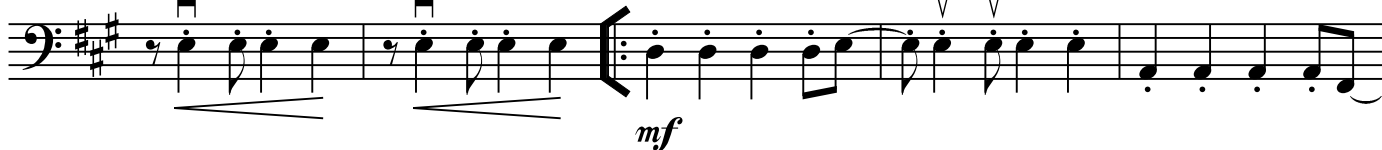
93



98



103



108



113



118



123

