

Lady D'Arbanville

Words and Music by Cat Stevens

Moderately

First system of piano introduction. Treble clef, key signature of one sharp (F#), 4/4 time. The melody consists of eighth and quarter notes. The bass line features a simple harmonic accompaniment with a slur under the first two measures.

Second system of piano introduction, continuing the melody and accompaniment from the first system.

Rubato

Em guitar chord diagram: 0 2 2 0 0 0

D guitar chord diagram: 0 2 3 2 3 0

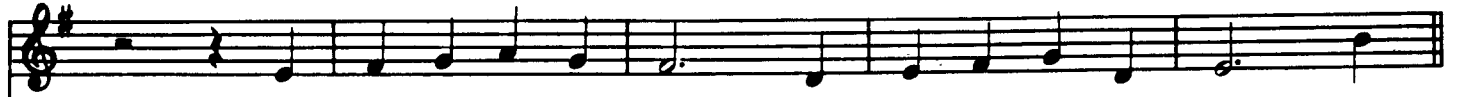
First system of vocal and piano accompaniment. The vocal line begins with the lyrics "My La - dy d'Ar - ban - ville". The piano accompaniment is marked *p* and features a complex harmonic structure with slurs and ties.

My La - dy d'Ar - ban - ville why do you sleep so

Em guitar chord diagram: 0 2 2 0 0 0

Second system of vocal and piano accompaniment. The vocal line continues with the lyrics "still? I'll wake you to - mor - row". The piano accompaniment continues with complex harmonies and slurs.

still? I'll wake you to - mor - row



and you will be my fill, Yes, you will be my fill. My



a tempo



La- dy d'Ar - ban-ville

why does it grieve me so?



But your heart seems so si - lent,

Why



do you breathe so low why do you breathe so low, my La - dy d'Ar - ban-ville
2. I loved you my la - dy





Why do you sleep so still, I'll
 Though in your grave you lie, I'll



wake you to - mor-row — And you will be my fill, Yes,
 al - ways be with you — This rose will nev - er die, this

to Coda



you will be my fill.
 rose will nev - er die.

N.C.

My



La - dy d'Ar - ban - ville you look so cold to - night,



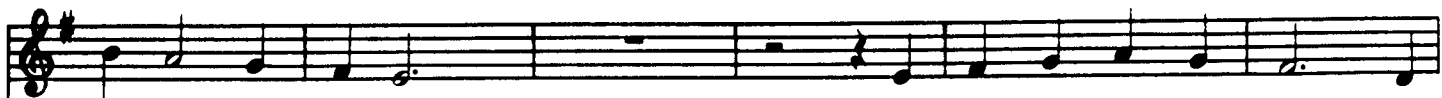
Your lips feel like win - ter, Your



skin has turned to white, your skin has turned to white. My La - dy d'Ar - ban - ville



why do you sleep so still, I'll



wake you to - mor-row

And you will be my fill. Yes,



you will be my fill. La, la, la, la, la, la.

La,



la, la, la, la, la.



La, la, la, la, la, la, la.




La, la, la, la, la, la,


la, la, la, la, la, la.



D.S.  al  Coda

 CODA



My  die I loved you my la - dy.



Though in your grave you lie.

I'll al - ways be



with you. —

This rose will nev - er die. this rose will nev - er die.

