

BOHEMIAN RHAPSODY

Words and Music by
FREDDIE MERCURY

Slowly

Chord diagrams: Bb6, C7, Bb6, C7, F7, Cb7, F7

Is this the real life? Is this just fan-ta-sy? Caught in a love-slide, No es-

Chord diagrams: Bb, Cb7, Bb, Cm, Bb7

cape from re-al-ity. O-pen your eyes, Look up to the skies— and

Chord diagrams: Bb, Cm, F7

see. I'm not a poor boy I need no sympathy be-cause I'm

Chord diagrams: Bb, Bb, A, Bb, D, Bb, A, Bb, Eb, Bb

easy come, easy go. Lit-tle high, lit-tle low. An-y way the wind blows

does n't real-ly mat-ter to me, to... me

1 Ma-ma... just killed a man. Put a gun a-gainst his head, pulled my
 2 Too late... my face has come. Sends shiv-ers down my spine, bod-y's

trig-ger, now he's dead Ma-ma, life had just be-gun, But
 ach-ing all the time Good-bye. ev-ry bod-y. I've got to go. Got-ra

now I've gone and thrown it all a-way. Ma-ma, ... ooh,
 leave you all be-hind and face the truth. Ma-ma, ... ooh,

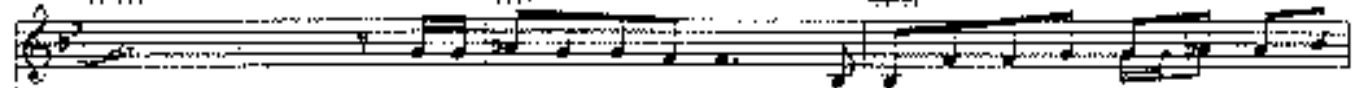
Cm



Fm



Bb



Did-a't mean to make you cry, If I'm not back a - gain this time to -
I don't want to die. I some-times wish I'd nev-er been born at



Bb



Bb



Cm



4 fr



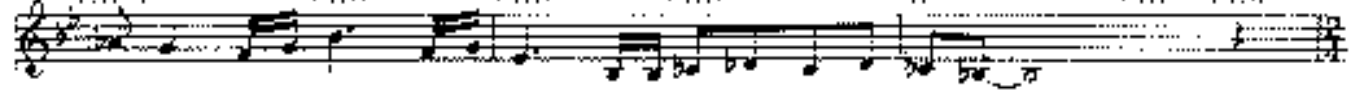
Ao



4 fr



Eb



thur-row. car-ry on, car-ry on as if noth-ing real-ly mat-ters...



Instrumental Solo

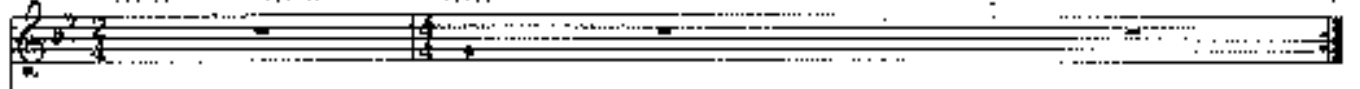
Eb dim



Fm7



Bb



Bb



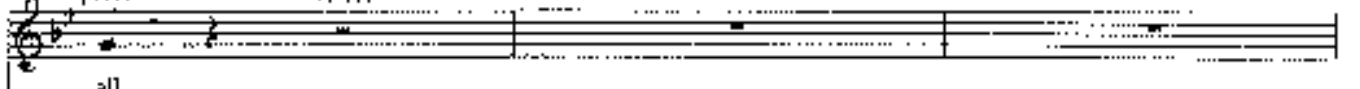
Bb



Cm



Fm



all.



Instrumental Solo

Chords: B7, Bb, G7

Chords: Cm, F, D, G7, Bbm

Allegretto tempo (♩ = ♩)

Chords: A, A7, A, D, A, Am, A

I see a little girl with a bow in her hair, she is

Chords: A, D, A, Adim, A, G, A, Bb, A, C, G7, Bb

Chorus

rouche, Scar-a-mouche, will you do the Fan-dan-cho. Then-dee-foh-ah-igh-ee-ah-ee-ah-ee-ah-igh-ee-ah-ee

A
No chord

mus. score with vocal line and piano accompaniment. Lyrics: "Cal - i - fo - r - n - i - a Cal - i - fo - r - n - i - a"

mus. score with piano accompaniment. Includes a chord diagram for A.

B Bb A Bb

mus. score with vocal line and piano accompaniment. Lyrics: "Mag - ic ... She's just a poor boy and"

mus. score with piano accompaniment. Includes the phrase "let cry" in the vocal line.

B Bb A Bb Ab Bb Bdim Bb Bdim Bbdim Bbdim Bbdim Bbdim

mus. score with vocal line and piano accompaniment. Lyrics: "no - body ... me ... She's just a poor boy from a poor town"

mus. score with piano accompaniment.

Bb Bdim Bb Bdim Bb Bdim Bb Bdim Bb Bdim Bb Bdim Bb Bdim

mus. score with vocal line and piano accompaniment. Lyrics: "Space has his life from the way ..."

mus. score with piano accompaniment.

Solo - las - y - no - me. - re - y - go - will - you - let - me - go. Bis - ni - lan! No. - we

- we - not - let - you - go. - at - all - we. Bis - ni - lan! We - will - not - let - you - go. - Let - us - go.

Bis - ni - lan! We - will - not - let - you - go. - Let - us - go. - We - will - not - let - you - go. - Let - us - go.

Will - not - let - you - go. - Let - us - go. - Ah. No. - no. - no. - no.

G^b
B^b
F^b
No chord
E^b
E^b

no, no, no. Oh my ma - ma - ma ma ma ma Ma - ma ma - ma, lei me go. Be -

E^b
A^b
D
C⁹
B^b

el ze-bub has a dev - il put a side for me. for me, ... for

E^b

me...

Instrumental Solo

F⁷
B^b7
E^b (Dress)
B^b
E^b

So you think you can stop me and spit it my

Bb
Bb
Bb7
Eb
Bb
Eb