

DOMINANT '7' RESOLUTIONS

A GUIDE TO PLAYING OVER V7 TO I RESOLUTIONS

COMPILED BY CHARLES MCNEAL

Introduction

One of the most important things a improvisor has to learn is how to resolve a line or an idea. It could be argued that you can play anything as long as you resolve it properly. One of the strongest resolutions you will find is the 'V7 to I' progression example: "C7 to F."

With these exercises I've compiled some strong melodic resolutions for the student to practice and learn in all 12 keys. These ideas can be used anytime you have a dominant 7th chord resolving to a Major chord a 5th away. You can also use these ideas if the dominant 7th chord moves to another dominant 7th chord a 5th away, example: D7 to G7.

The ideas should be practiced with a metronome with the target tempo being 240 bpm. Start slow!!! Play the written idea then transpose it to fit the next chord. If you have never transposed before, use the chord tones to help you find the notes in the new key, example: The first idea starts on the 5th of the G7chord then goes to the 7th, to the 6th, back to the 5th then jumps to the root, then the 7th to the 6th, back to the 5th and lands on the root of the C major chord. The more you transpose the easier it will become. Every idea or lick you learn should be taken through all 12 keys. You'll find that you favor playing certain things in certain keys but you shouldn't be limited to only playing and idea in 1 key.

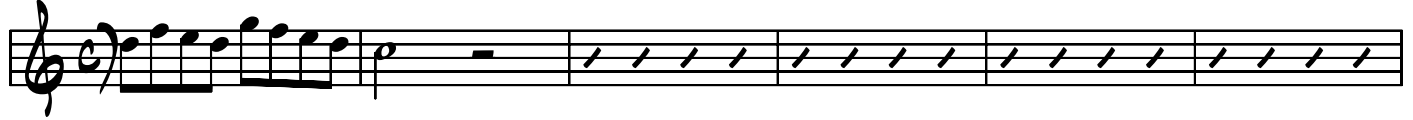
The majority of these ideas are just 1 bar in length and can also be thought of as being a short 'ii-V7-I' idea. Once you've learned the idea try to incorporate it as a part of your improvised line not just a 'lick' unto itself. Try to play a line that leads into the idea and continues out of the idea.

Enjoy...

Charles McNeal

DOMINANT 7 RESOLUTIONS


G7 C C7 F F7 B^b



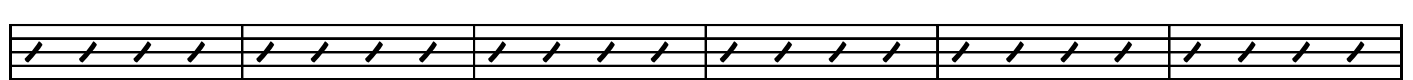
B^b7 E^b E^b7 A^b A^b7 D^b



7
C#7 F# F#7 B B7 E



13
E7 A A7 D D7 G




19
G7 C



25
G7 C F7 B^b E^b7 A^b



27
C#7 F# B7 E A7 D



A^b7 D^b F[#]7 B E7 A

Musical staff with treble clef, six measures of rhythmic notation (diagonal slashes), and measure numbers 39-44.

D7 G C7 F B^b7 E^b

Musical staff with six measures of rhythmic notation (diagonal slashes).

45

G7 C C7 F F7

Musical staff with treble clef, notes (G, A, B, C, D, E, F, G, A, B, C, D, E, F, G), and measure numbers 51-55.

B^b B^b7 E^b E^b7 A^b G[#]7

Musical staff with six measures of rhythmic notation (diagonal slashes).

56

C[#] C[#]7 F[#] F[#]7 B B7

Musical staff with six measures of rhythmic notation (diagonal slashes).

62

E E7 A A7 D D7

Musical staff with six measures of rhythmic notation (diagonal slashes).

68

G G7 C

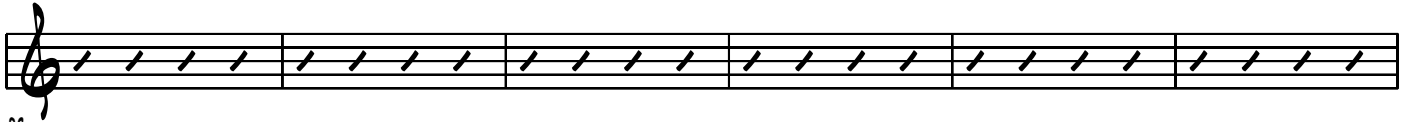
Musical staff with three measures of rhythmic notation (diagonal slashes).

74

G7 C G[#]7 C[#] A7 D

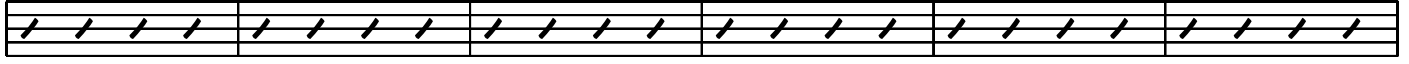
Musical staff with treble clef, notes (G, A, B, C, D, E, F, G, A, B, C, D, E, F, G), and measure numbers 77-82.

B^b7 E^b B7 E C7 F



83

C[#]7 F[#] D7 G E^b7 A^b



89

E7 A F7 B^b F[#]7 B



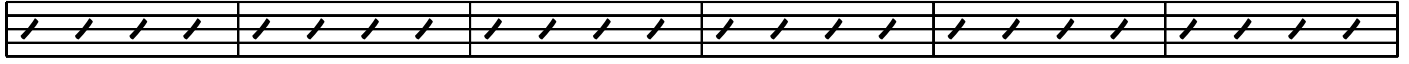
95

G7 C C7 F F7 B^b



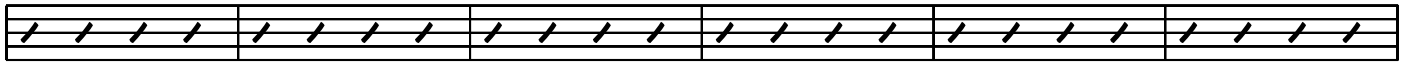
101

B^b7 E^b E^b7 A^b A^b7 D^b



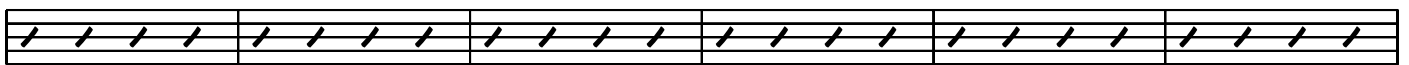
107

C[#]7 F[#] F[#]7 B B7 E



113

E7 A A7 D D7 G



119

G7 C



125

127

G7 C C7 F F7 Bb

Bb7 Eb Eb7 Ab Ab7 Db

133

C#7 F# F#7 B B7 E

139

E7 A A7 D D7 G

145

G7 C

151

G7 C F7 Bb Eb7 Ab

153

C#7 F# B7 E A7 D

159

Ab7 Db F#7 B E7 A

165

D7 G C7 F B^b7 E^b

Musical staff with treble clef and six measures of rhythmic notation (diagonal slashes).

171

G7 C C7 F F7 B^b

Musical staff with treble clef, starting with a melodic line in the first two measures followed by rhythmic notation.

177

B^b7 E^b E^b7 A^b A^b7 D^b

Musical staff with six measures of rhythmic notation (diagonal slashes).

183

C[#]7 F[#] F[#]7 B B7 E

Musical staff with six measures of rhythmic notation (diagonal slashes).

189

E7 A A7 D D7 G

Musical staff with six measures of rhythmic notation (diagonal slashes).

195

G7 C

Musical staff with two measures of rhythmic notation (diagonal slashes).

201

G7 C G[#]7 C[#] A7 D

Musical staff with treble clef, starting with a melodic line in the first two measures followed by rhythmic notation.

206

B^b7 E^b B7 E C7 F

Musical staff with six measures of rhythmic notation (diagonal slashes).

209

C#7 F# D7 G Eb7 Ab

Musical staff with treble clef and six measures of rhythmic notation (diagonal slashes).

215

E7 A F7 Bb F#7 B

Musical staff with six measures of rhythmic notation (diagonal slashes).

221

G7 C C7 F F7 Bb

Musical staff with treble clef, notes, and six measures of rhythmic notation (diagonal slashes).

227

Bb7 Eb Eb7 Ab Ab7 Db

Musical staff with six measures of rhythmic notation (diagonal slashes).

233

C#7 F# F#7 B B7 E

Musical staff with six measures of rhythmic notation (diagonal slashes).

239

E7 A A7 D D7 G

Musical staff with six measures of rhythmic notation (diagonal slashes).

245

G7 C

Musical staff with two measures of rhythmic notation (diagonal slashes).

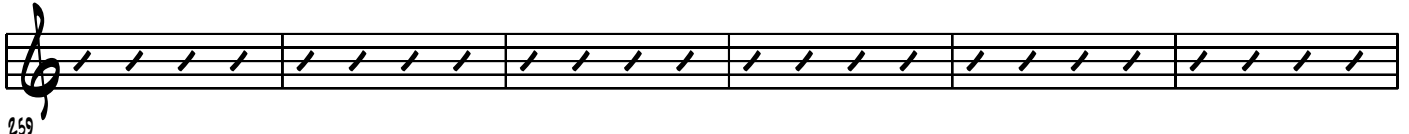
251

G7 C F7 Bb Eb7 Ab

Musical staff with treble clef, notes, and six measures of rhythmic notation (diagonal slashes).

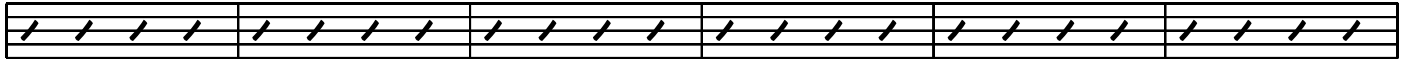
256

C#7 F# B7 E A7 D



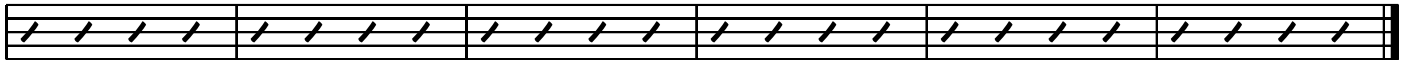
259

Ab7 Db F#7 B E7 A



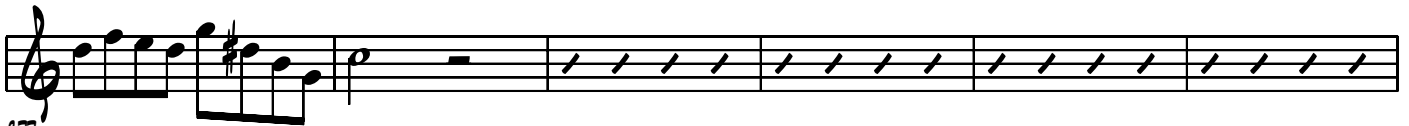
265

D7 G C7 F Bb7 Eb



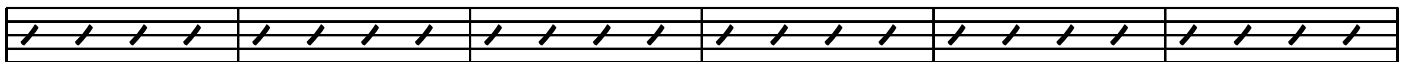
271

G7 C C7 F F7 Bb



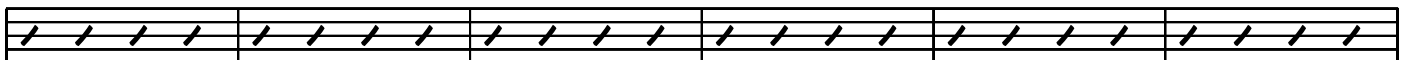
277

Bb7 Eb Eb7 Ab Ab7 Db



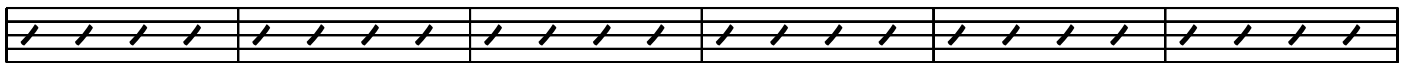
283

C#7 F# F#7 B B7 E



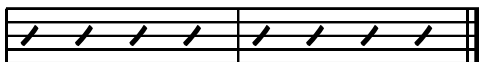
289

E7 A A7 D D7 G



295

G7 C



301

306

G7 C F#7 B F7 Bb

E7 A Eb Ab D7 G

309

C#7 F# C7 F B7 E

315

Bb7 Eb A7 D Ab7 Db

321

G7 C C7 F C F7 Bb

Bb7 Eb Eb7 Ab Ab7 Db

336

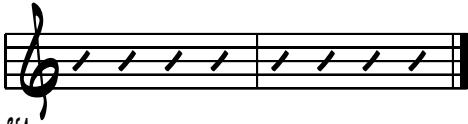
C#7 F# F#7 B B7 E

339

E7 A A7 D D7 G

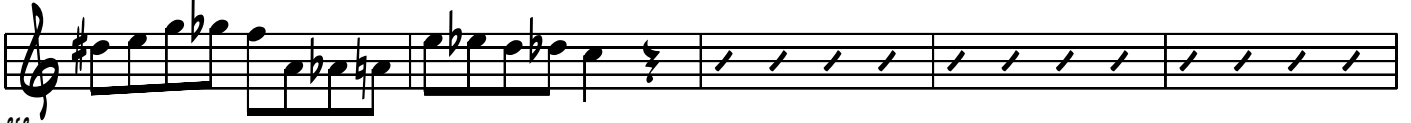
345

G7 C



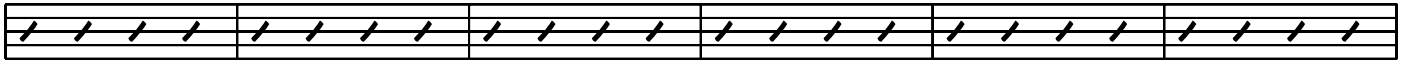
351

G7 C C7 F F7



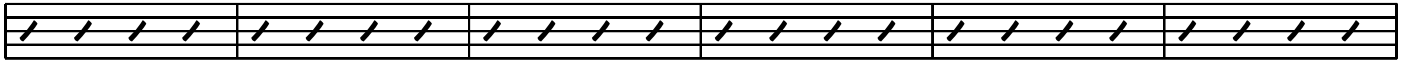
355

Bb Bb7 Eb Eb7 Ab Ab7



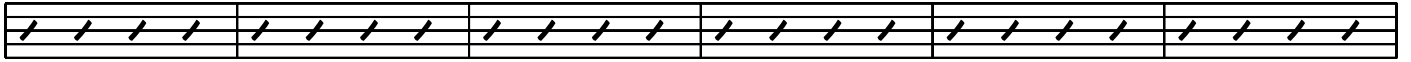
358

Db C#7 F# F#7 B B7



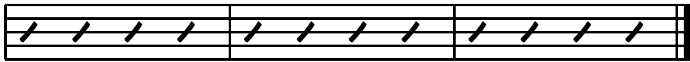
364

E E7 A A7 D D7



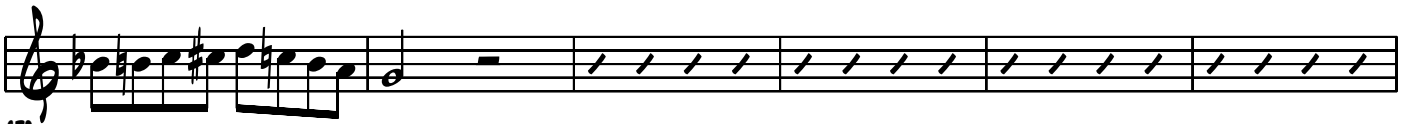
370

G G7 C



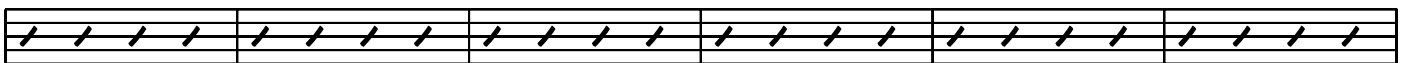
376

G7 C G#7 C# A7 D



379

Bb7 Eb B7 E C7 F



385

C#7 F# D7 G Eb7 Ab

Musical staff with treble clef and six measures of rhythmic notation (diagonal slashes).

391

E7 A F7 Bb F#7 B

Musical staff with six measures of rhythmic notation (diagonal slashes).

397

G7 C C7 F F7 Bb

Musical staff with treble clef, notes, and six measures of rhythmic notation (diagonal slashes).

403

Bb7 Eb Eb7 Ab Ab7 Db

Musical staff with six measures of rhythmic notation (diagonal slashes).

409

C#7 F# F#7 B B7 E

Musical staff with six measures of rhythmic notation (diagonal slashes).

415

E7 A A7 D D7 G

Musical staff with six measures of rhythmic notation (diagonal slashes).

421

G7 C

Musical staff with two measures of rhythmic notation (diagonal slashes).

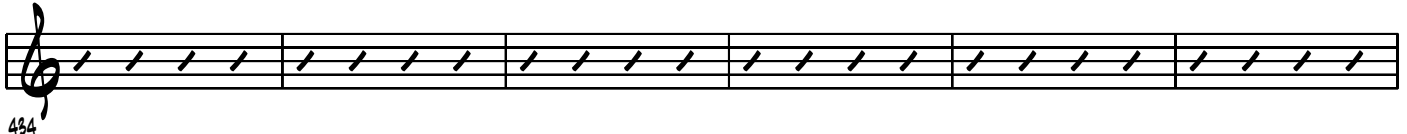
427

G7 C F7 Bb Eb7

Musical staff with treble clef, notes, and six measures of rhythmic notation (diagonal slashes).

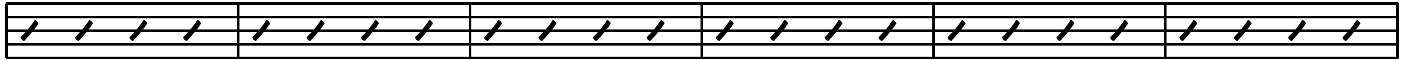
429

A^b C[#]7 F[#] B7 E A7



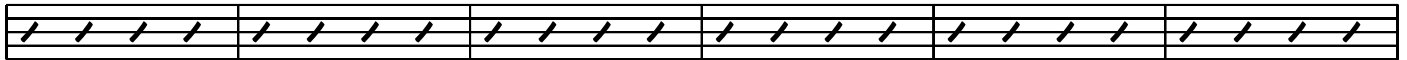
434

D A^b7 D^b F[#]7 B E7



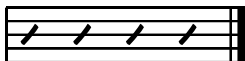
440

A D7 G C7 F B^b7



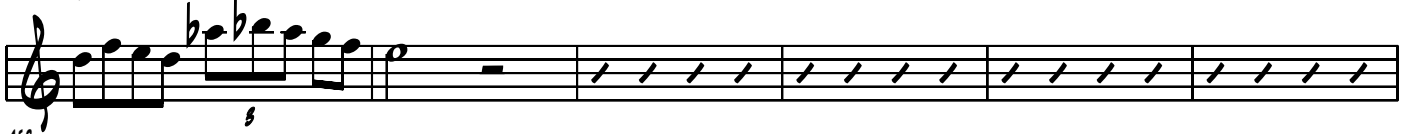
446

E^b



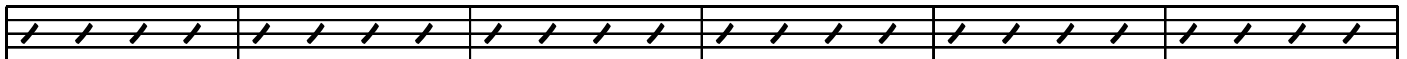
452

G7 C C7 F F7 B^b



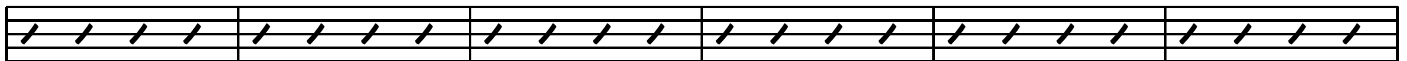
458

B^b7 E^b E^b7 A^b A^b7 D^b



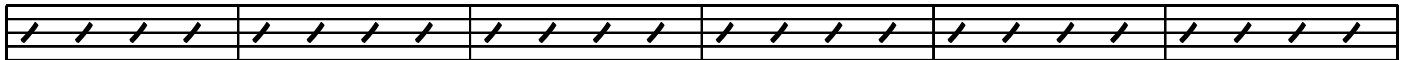
459

C[#]7 F[#] F[#]7 B B7 E



465

E7 A A7 D D7 G



471

G7 C



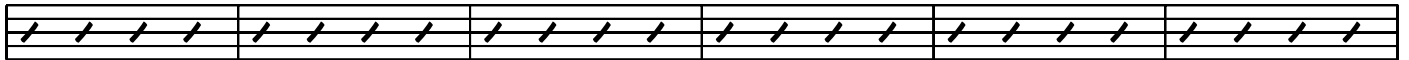
477

G7 C F7 Bb Eb7 Ab



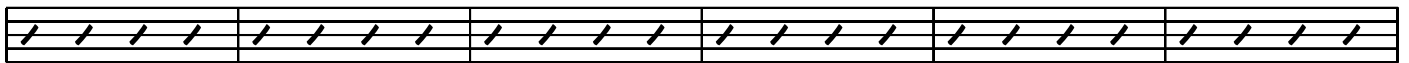
479

C#7 F# B7 E A7 D



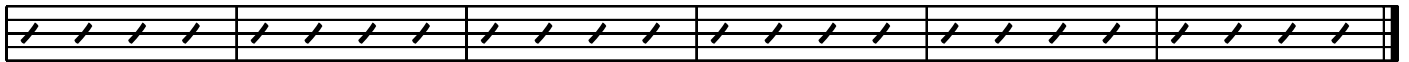
485

Ab7 Db F#7 B E7 A



491

D7 G C7 F Bb7 Eb



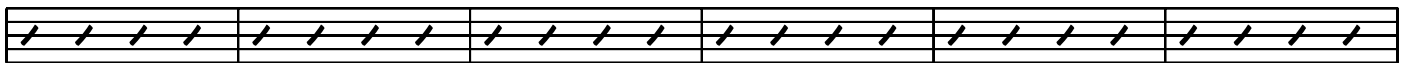
497

G7 C C7 F F7 Bb



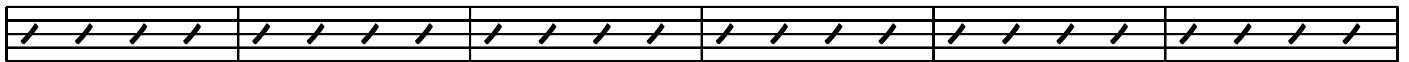
503

Bb7 Eb Eb7 Ab Ab7 Db



509

C#7 F# F#7 B B7 E



515

E7 A A7 D D7 G

521
Musical staff with treble clef and six measures of rhythmic notation (diagonal slashes).

G7 C

Musical staff with six measures of rhythmic notation (diagonal slashes).

527

G7 C G#7 C# A7 D

529
Musical staff with treble clef, a melodic line in the first measure, and five measures of rhythmic notation (diagonal slashes).

Bb7 Eb B7 E C7 F

Musical staff with six measures of rhythmic notation (diagonal slashes).

535

C#7 F# D7 G Eb7 Ab

Musical staff with six measures of rhythmic notation (diagonal slashes).

541

E7 A F7 Bb F#7 B

Musical staff with six measures of rhythmic notation (diagonal slashes).

547

G7 C F7 Bb Eb7 Ab

553
Musical staff with treble clef, a melodic line in the first measure, and five measures of rhythmic notation (diagonal slashes).

C#7 F# B7 E A7 D

Musical staff with six measures of rhythmic notation (diagonal slashes).

559

A^b7 D^b F[#]7 B E7 A

Musical staff with treble clef and six measures of rhythmic notation (diagonal slashes).

565

D7 G C7 F B^b7 E^b

Musical staff with six measures of rhythmic notation (diagonal slashes).

571

G7 C C7 F F7

Musical staff with treble clef, six measures of notation including a melodic line and a whole rest.

577

B^b B^b7 E^b E^b7 A^b A^b7

Musical staff with six measures of rhythmic notation (diagonal slashes).

582

D^b C[#]7 F[#] F[#]7 B B7

Musical staff with six measures of rhythmic notation (diagonal slashes).

588

E E7 A A7 D D7

Musical staff with six measures of rhythmic notation (diagonal slashes).

594

G G7 C

Musical staff with three measures of rhythmic notation (diagonal slashes).

600

G7 C G[#]7 C[#] A7 D

Musical staff with treble clef, six measures of notation including a melodic line and a whole rest.

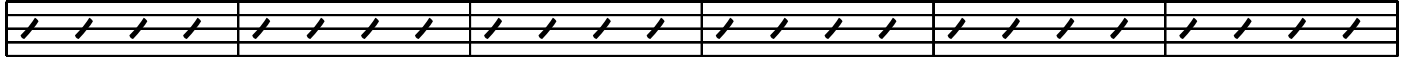
605

B^b7 E^b B7 E C7 F



609

C[#]7 F[#] D7 G E^b7 A^b



615

E7 A F7 B^b F[#]7 B



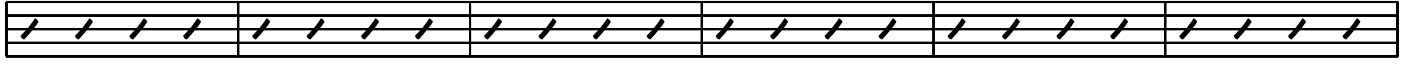
621

G7 C C7 F F7 B^b



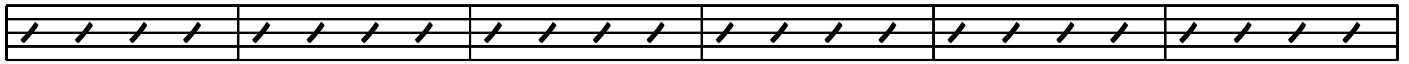
627

B^b7 E^b E^b7 A^b A^b7 D^b



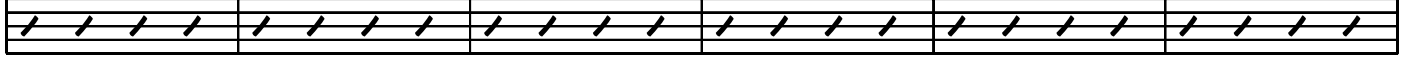
633

C[#]7 F[#] F[#]7 B B7 E



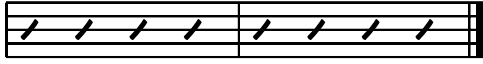
639

E7 A A7 D D7 G



645

G7 C



651

653

G7 C F#7 B F7 Bb

Detailed description: A musical staff in treble clef. Measure 653 starts with a G7 chord and contains a melodic line: G4 (quarter), A4 (quarter), B4 (quarter), A4-G4 (beamed eighth notes), F#4 (quarter), E4 (quarter), D4 (half). Measure 654 has a C chord and a whole rest. Measures 655-658 have F#7, B, F7, and Bb chords respectively, each with a whole rest.

E7 A Eb Ab D7 G

Detailed description: An empty musical staff with six measures, corresponding to measures 659-664.

659

C#7 F# C7 F B7 E

Detailed description: An empty musical staff with six measures, corresponding to measures 665-670.

665

Bb7 Eb A7 D Ab7 Db

Detailed description: An empty musical staff with six measures, corresponding to measures 671-676.

671

G7 C C7 F F7 Bb

Detailed description: A musical staff in treble clef. Measure 677 starts with a G7 chord and contains a melodic line: G4 (quarter), A4 (quarter), B4 (quarter), A4-G4 (beamed eighth notes), F#4 (quarter), E4 (quarter), D4 (half). Measure 678 has a C chord and a whole rest. Measures 679-682 have C7, F, F7, and Bb chords respectively, each with a whole rest.

Bb7 Eb Eb7 Ab Ab7 Db

Detailed description: An empty musical staff with six measures, corresponding to measures 683-688.

683

C#7 F# F#7 B B7 E

Detailed description: An empty musical staff with six measures, corresponding to measures 689-694.

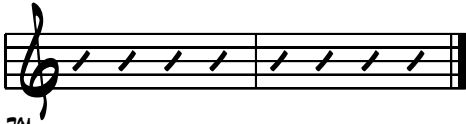
689

E7 A A7 D D7 G

Detailed description: An empty musical staff with six measures, corresponding to measures 695-700.

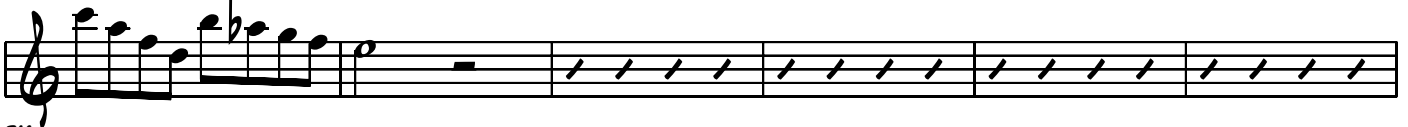
695

G7 C



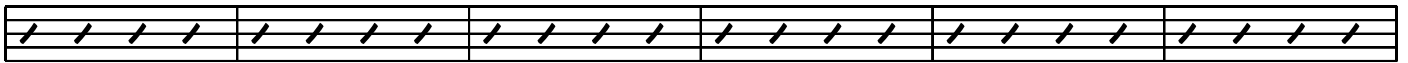
701

G7 C G#7 C# A7 D



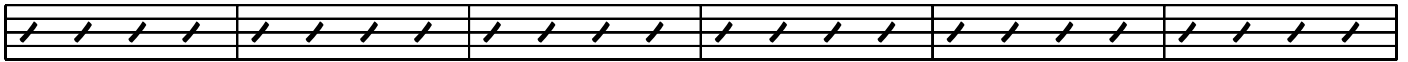
703

Bb7 Eb B7 E C7 F



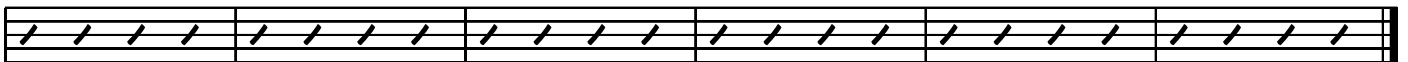
709

C#7 F# D7 G Eb7 Ab



715

E7 A F7 Bb F#7 B



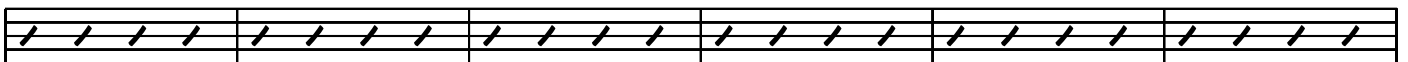
721

G7 C C7 F C F7 Bb



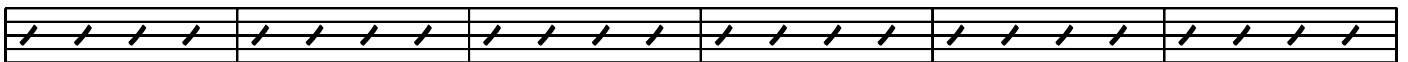
727

Bb7 Eb Eb7 Ab Ab7 Db



733

C#7 F# F#7 B B7 E



739

E7 A A7 D D7 G

Musical staff with treble clef, six measures of rhythmic notation (diagonal slashes), and measure numbers 745-750.

G7 C

Musical staff with treble clef, two measures of rhythmic notation (diagonal slashes), ending with a double bar line.

751

G7 C C7 F F7 Bb

Musical staff with treble clef, six measures of music. Measures 1-3 contain a melodic line with eighth notes and a sharp sign. Measures 4-6 contain rhythmic notation (diagonal slashes). Measure numbers 753-758.

Bb7 Eb Eb7 Ab Ab7 Db

Musical staff with treble clef, six measures of rhythmic notation (diagonal slashes).

759

C#7 F# F#7 B B7 E

Musical staff with treble clef, six measures of rhythmic notation (diagonal slashes).

765

E7 A A7 D D7 G

Musical staff with treble clef, six measures of rhythmic notation (diagonal slashes).

771

G7 C

Musical staff with treble clef, two measures of rhythmic notation (diagonal slashes), ending with a double bar line.

777

G7 C C7 F F7 Bb

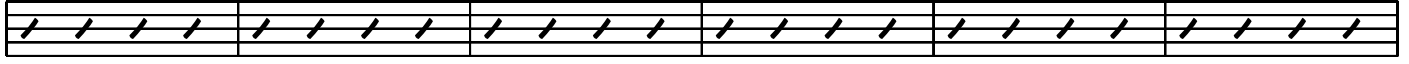
Musical staff with treble clef, six measures of music. Measures 1-3 contain a melodic line with eighth notes and a sharp sign. Measures 4-6 contain rhythmic notation (diagonal slashes). Measure numbers 779-784.

B^b7 E^b E^b7 A^b A^b7 D^b



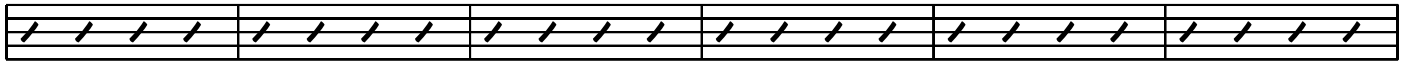
785

C#7 F# F#7 B B7 E



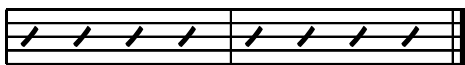
791

E7 A A7 D D7 G



797

G7 C



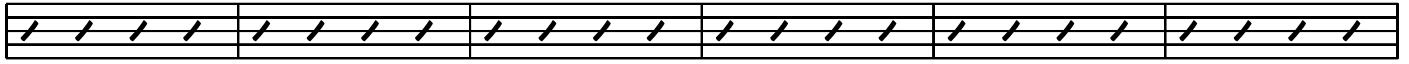
805

G7 C F7 B^b E^b7



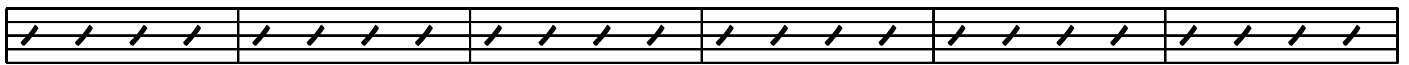
805

A^b C#7 F# B7 E A7



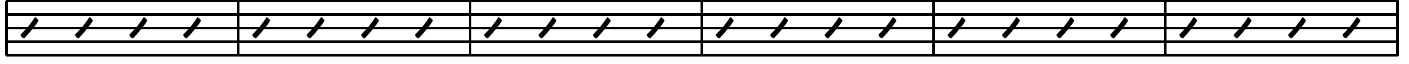
810

D A^b7 D^b F#7 B E7



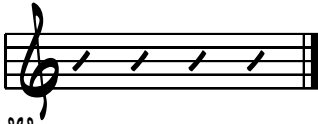
816

A D7 G C7 F B^b7



822

E^b



828

G7

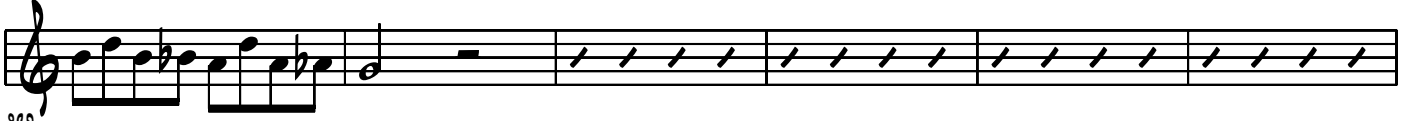
C

G#7

C#

A7

D



829

B^b7

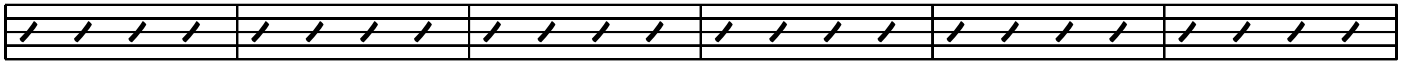
E^b

B7

E

C7

F



835

C#7

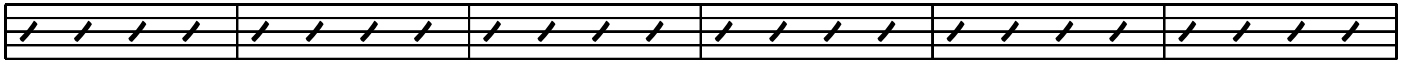
F#

D7

G

E^b7

A^b



841

E7

A

F7

B^b

F#7

B



847

G7

C

C7

F

F7

B^b



853

B^b7

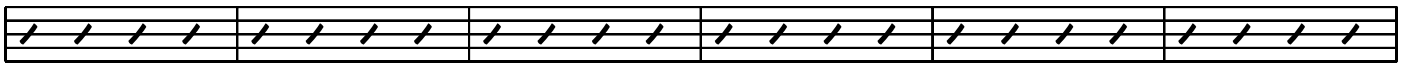
E^b

E^b7

A^b

A^b7

D^b



859

C#7

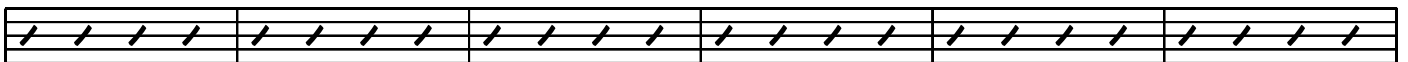
F#

F#7

B

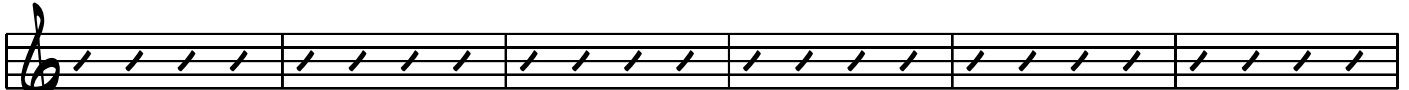
B7

E



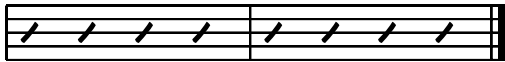
865

E7 A A7 D D7 G



871

G7 C



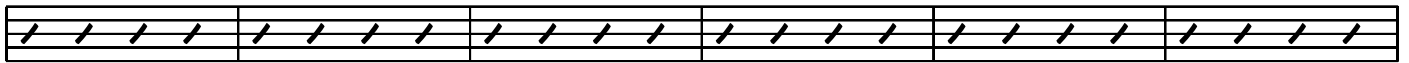
877

G7 C C7 F F7 Bb



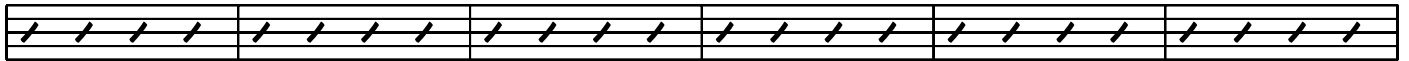
879

Bb7 Eb Eb7 Ab Ab7 Db



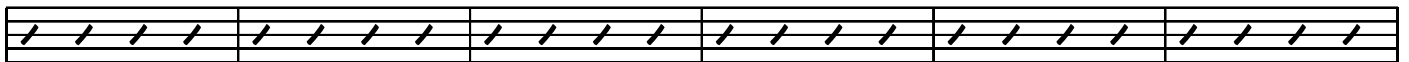
885

C#7 F# F#7 B B7 E



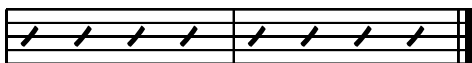
891

E7 A A7 D D7 G



897

G7 C



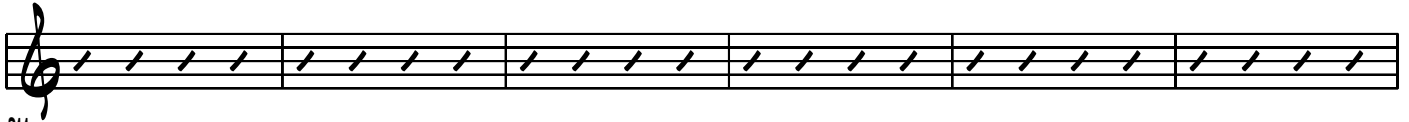
903

G7 C G#7 C# A7 D



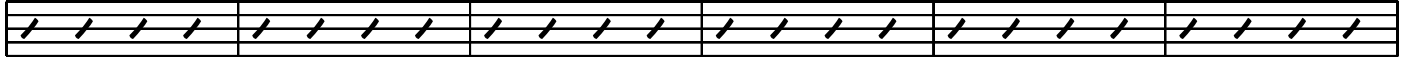
905

B^b7 E^b B7 E C7 F



911

C[#]7 F[#] D7 G E^b7 A^b



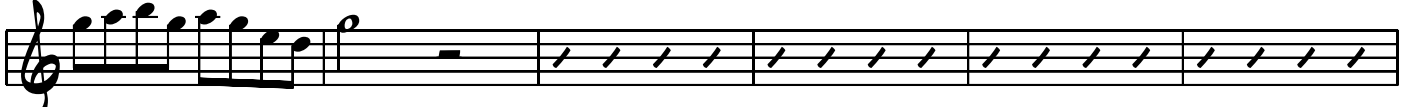
917

E7 A F7 B^b F[#]7 B



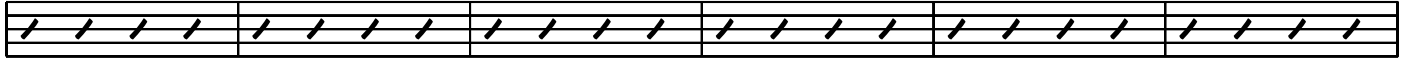
923

G7 C F[#]7 B F7 B^b



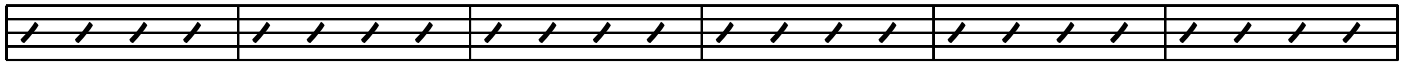
929

E7 A E^b7 A^b D7 G



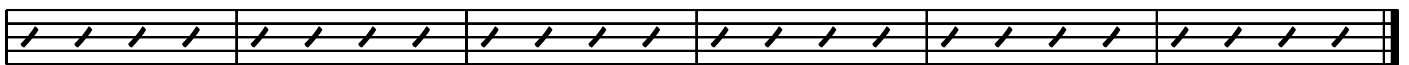
935

C[#]7 F[#] C7 F B7 E



941

B^b7 E^b A7 D A^b7 D^b



947

G7 C7 F F7 B^b



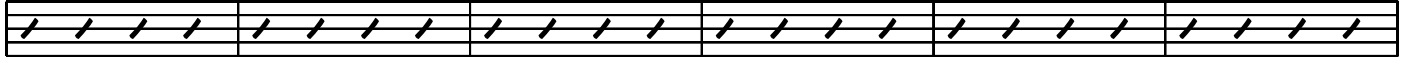
953

B^b7 E^b E^b7 A^b A^b7 D^b



959

C[#]7 F[#] F[#]7 B B7 E



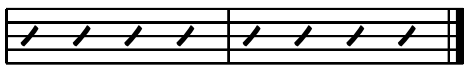
965

E7 A A7 D D7 G



971

G7 C



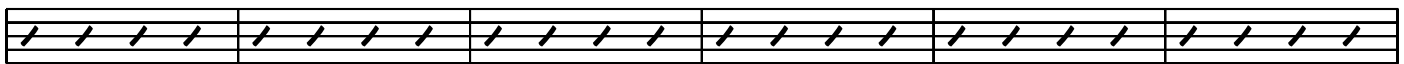
977

G7 C F7 B^b E^b7 A^b



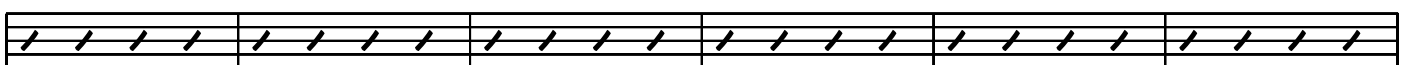
979

C[#]7 F[#] B7 E A7 D



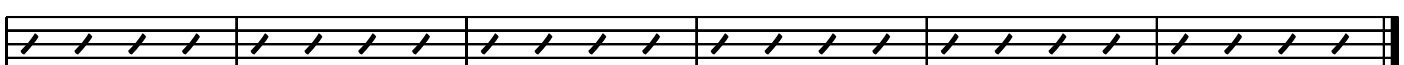
985

F[#]7 B E7 A D7 G



991

C7 F B^b7 E^b A^b7 D^b



997

G7 C C7 F F7 B^b

B^b7 E^b E^b7 A^b A^b7 D^b

C[#]7 F[#] F[#]7 B B7 E

E7 A A7 D D7 G

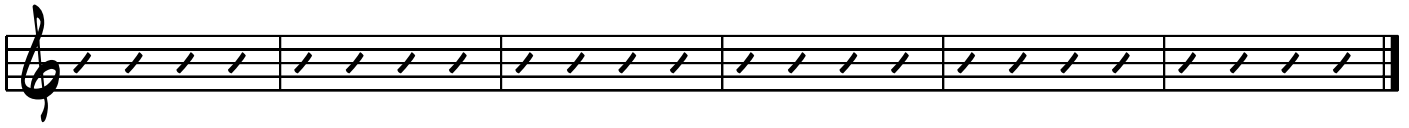
G7 C

G7 C G[#]7 C[#] A7 D

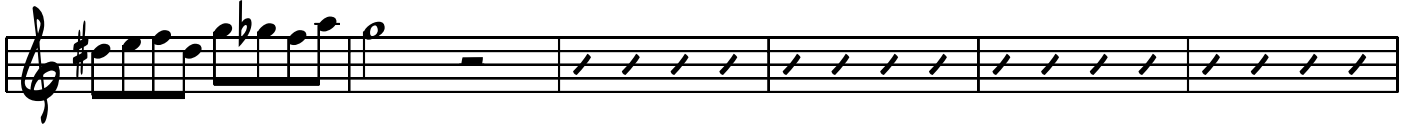
B^b7 E^b B7 E C7 F

C[#]7 F[#] D7 G E^b7 A^b

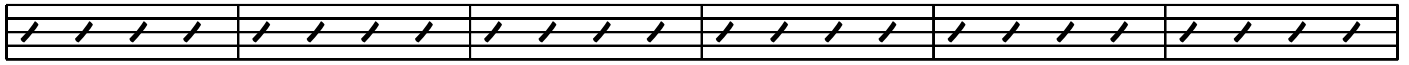
E7 A F7 B^b F#7 B



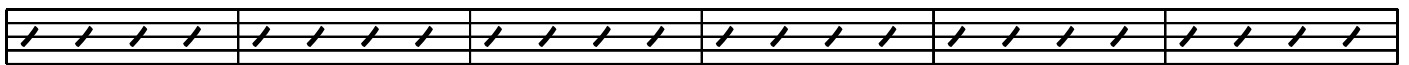
G7 C C7 F F7 B^b



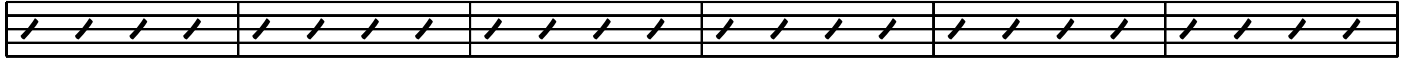
B^b7 E^b E^b7 A^b A^b7 D^b



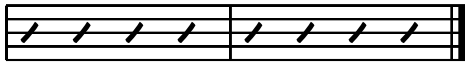
C#7 F# F#7 B B7 E



E7 A A7 D D7 G



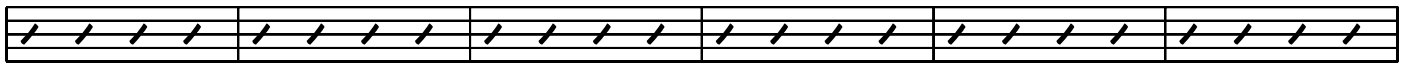
G7 C



G7 C F#7 B F7



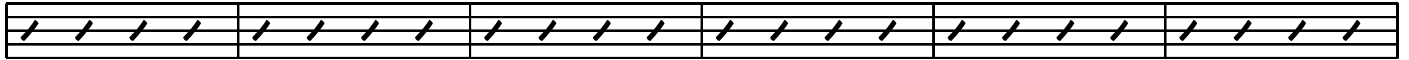
B^b E7 A E^b7 A^b D7



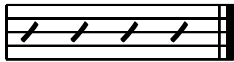
G C#7 F# C7 F B7



E Bb7 Eb A7 D Ab7



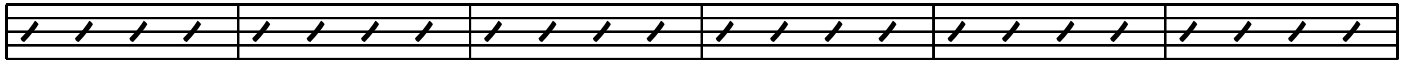
Db



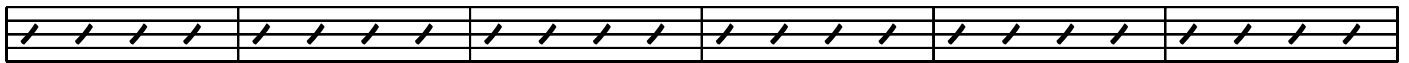
G7 C C7 F F7 Bb



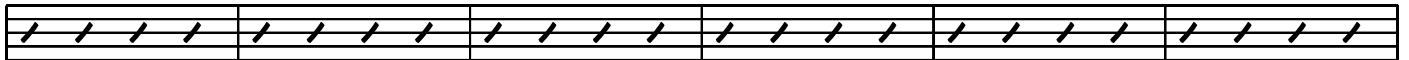
Bb7 Eb Eb7 Ab Ab7 Db



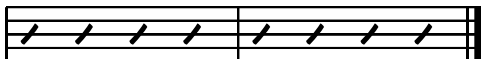
C#7 F# F#7 B B7 E



E7 A A7 D D7 G



G7 C



G7 C F7 B^b E^b7

A^b C#7 F# B7 E A7

D A^b7 D^b F#7 B E7

A D7 G C7 F B^b7

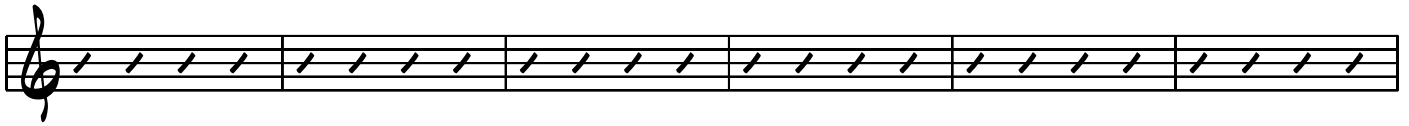
E^b

G7 C F7 B^b E^b7

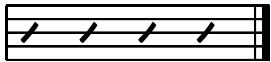
A^b C#7 F# B7 E A7

D F#7 B E7 A D7

G C7 F B^b7 E^b A^b7



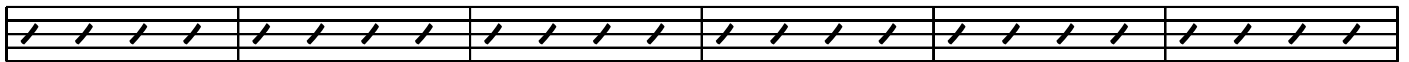
D^b



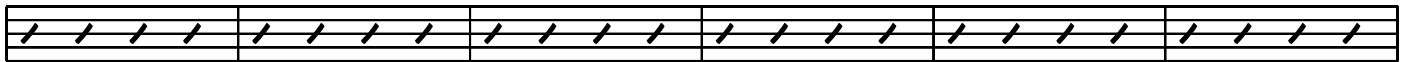
G7 C C7 F F7 B^b



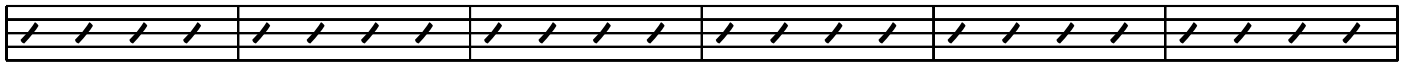
B^b7 E^b E^b7 A^b A^b7 D^b



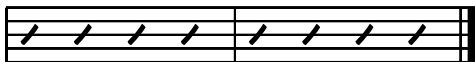
C#7 F# F#7 B B7 E



E7 A A7 D D7 G



G7 C



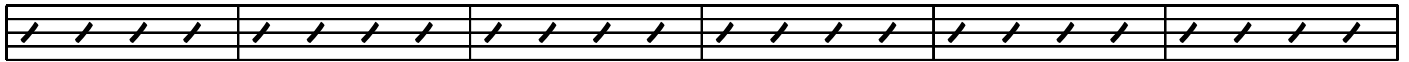
G7 C F7 B^b E^b7 A^b



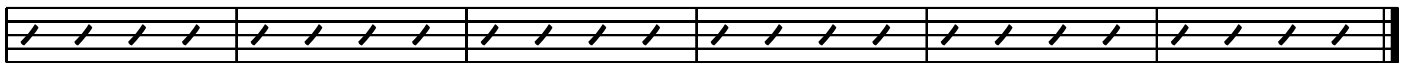
C#7 F# B7 E A7 D



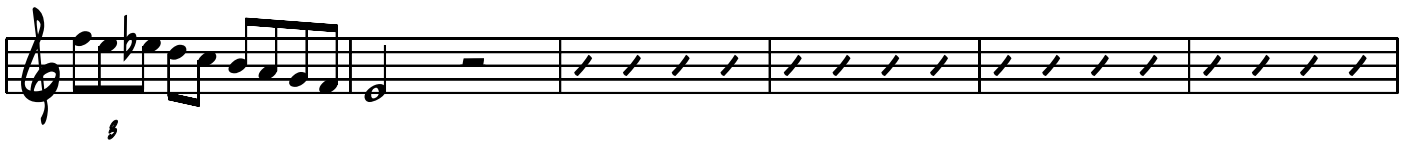
Ab7 Db F#7 B E7 A



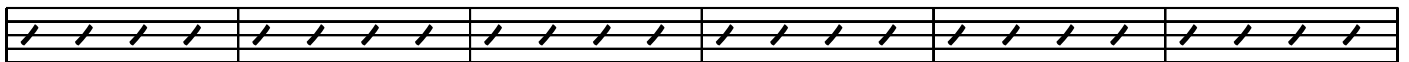
D7 G C7 F Bb7 Eb



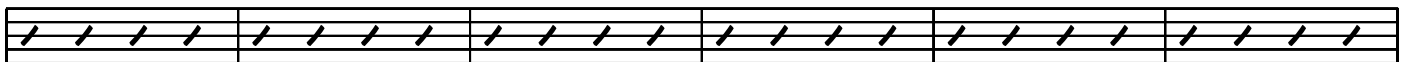
G7 C C7 F F7 Bb



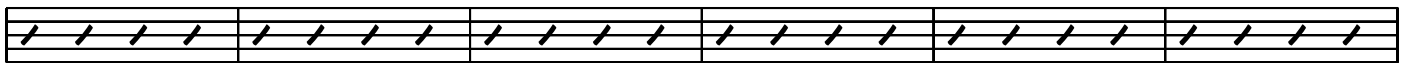
Bb7 Eb Eb7 Ab Ab7 Db



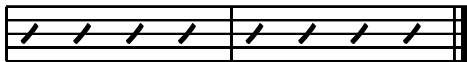
C#7 F# F#7 B B7 E



E7 A A7 D D7 G



G7 C



G7 C F#7 B F7 Bb

E7 A Eb Ab D7 G

C#7 F# C7 F B7 E

Bb7 Eb A7 D Ab7 Db

G7 C F7 Bb

Bb7 Eb Eb7 Ab Ab7 Db

C#7 F# F#7 B B7 E

E7 A A7 D D7 G

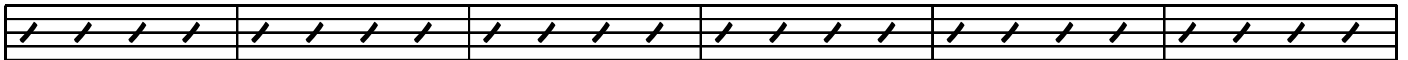
G7 C



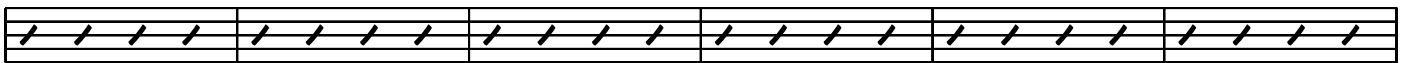
G7 C G#7 C# A7



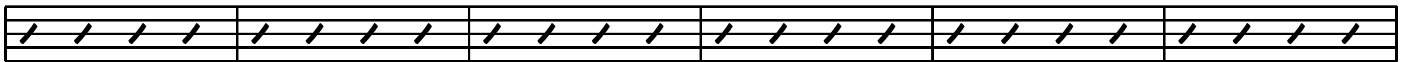
D Bb7 Eb B7 E C7



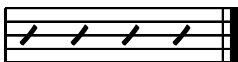
F C#7 F# D7 G Eb7



Ab E7 A F7 Bb F#7



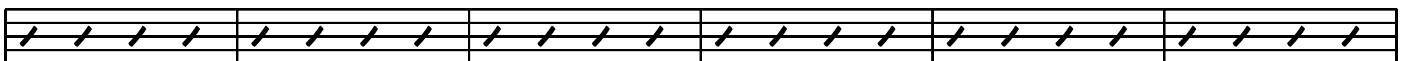
B



G7 C C7 F F7 Bb



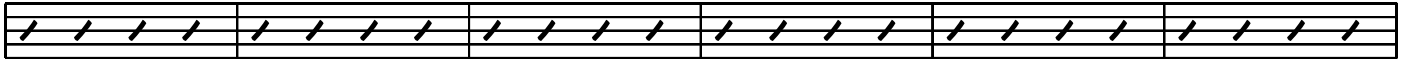
Bb7 Eb Eb7 Ab Ab7 Db



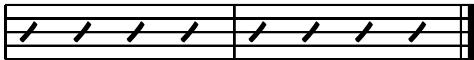
C#7 F# F#7 B B7 E



E7 A A7 D D7 G



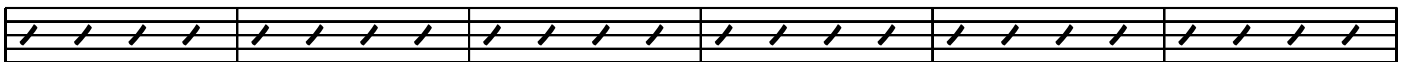
G7 C



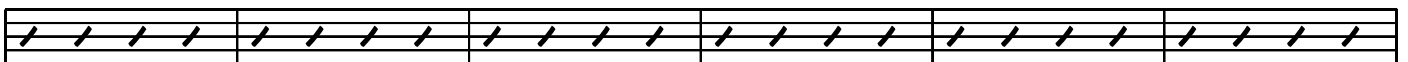
G7 C F7 Bb Eb7



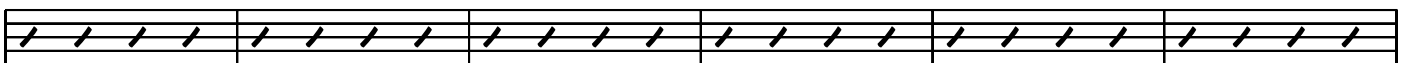
Ab C#7 F# B7 E A7



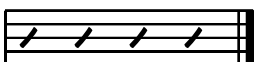
D F#7 B E7 A D7



G C7 F Bb7 Eb Ab7



Db



G7 C C7 F F7 B^b

B^b7 E^b E^b7 A^b A^b7 D^b

C#7 F# F#7 B B7 E

E7 A A7 D D7 G

G7 C

G7 C C7 F F7 B^b

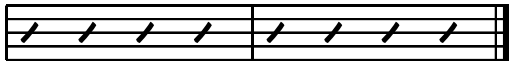
B^b7 E^b E^b7 A^b A^b7 D^b

C#7 F# F#7 B B7 E

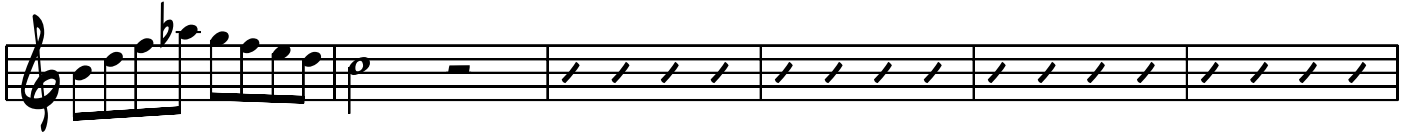
E7 A A7 D D7 G



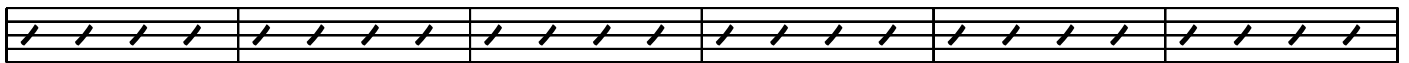
G7 C



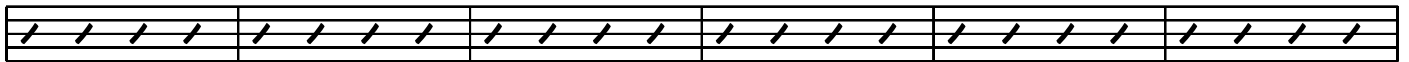
G7 C F7 Bb Eb7 Ab



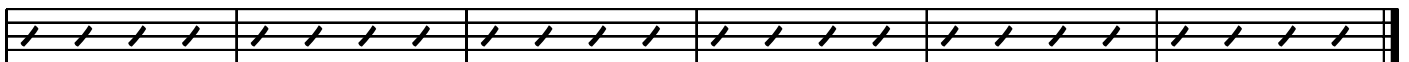
C#7 F# B7 E A7 D



Ab7 Db F#7 B E7 A



D7 G C7 F Bb7 Eb



G7 C C7 F F7



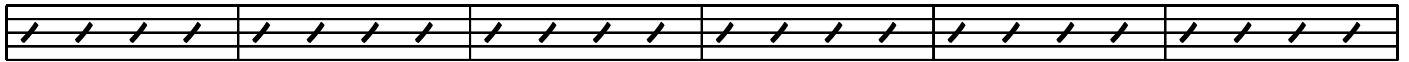
Bb Bb7 Eb Eb7 Ab Ab7



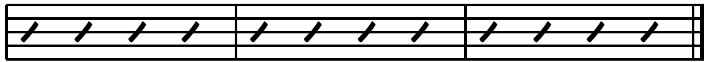
D^b C[#]7 F[#] F[#]7 B B7



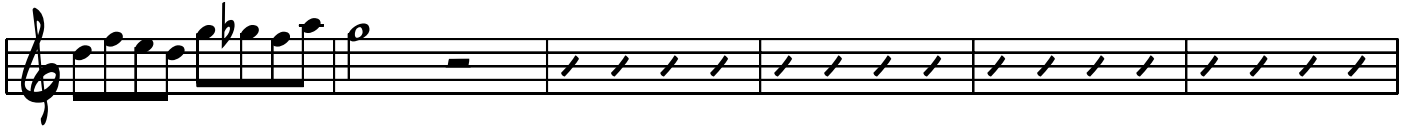
E E7 A A7 D D7



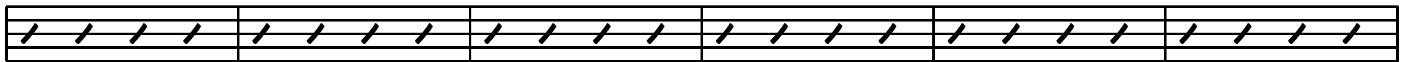
G G7 C



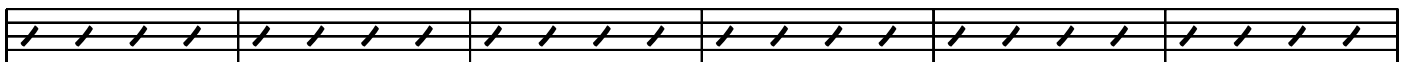
G7 C G[#]7 C[#] A7 D



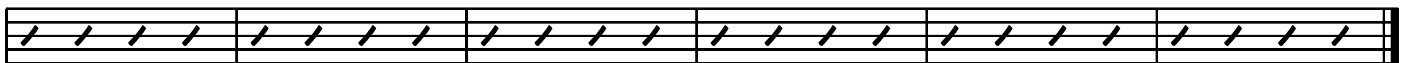
B^b7 E^b B7 E C7 F



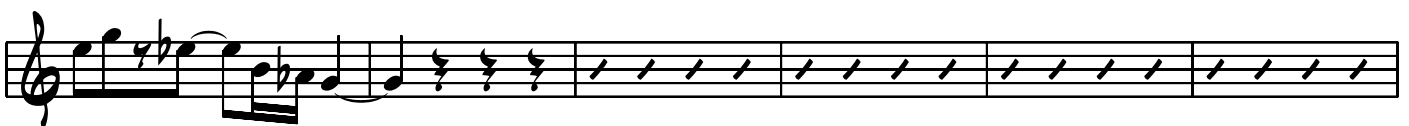
C[#]7 F[#] D7 G E^b7 A^b



E7 A F7 B^b F[#]7 B



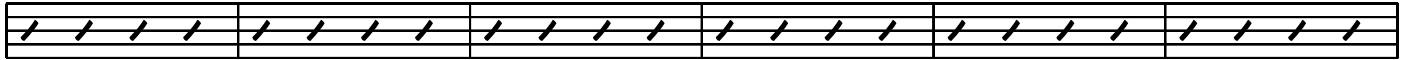
G7 C C7 F C F7 B^b



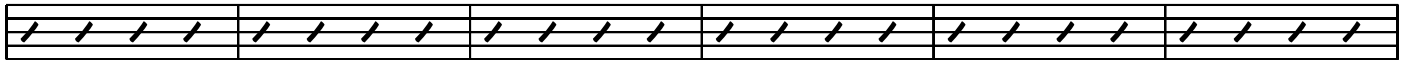
B^b7 E^b E^b7 A^b A^b7 D^b



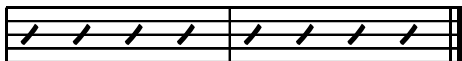
C[#]7 F[#] F[#]7 B B7 E



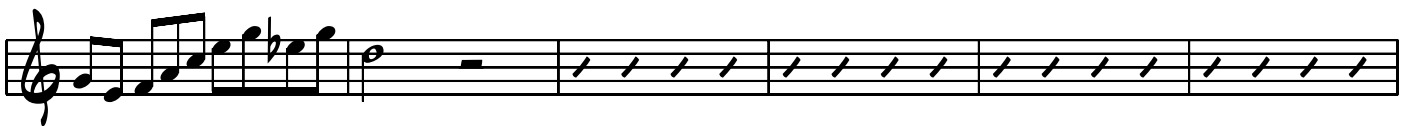
E7 A A7 D D7 G



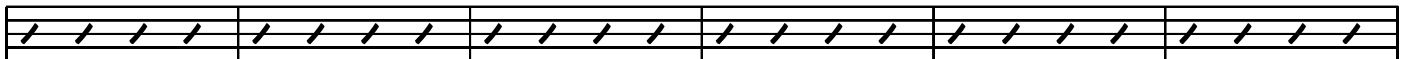
G7 C



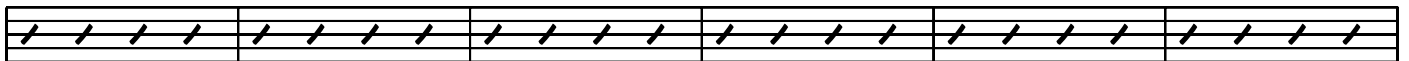
G7 C F7 B^b E^b7 A^b



C[#]7 F[#] B7 E A7 D



F[#]7 B E7 A D7 G



C7 F B^b7 E^b A^b7 D^b



G7 C F7 B^b E^b7

A^b C#7 F# B7 E A7

D A^b7 D^b F#7 B E7

A D7 G C7 F B^b7

E^b

G7 C F7 B^b E^b7 A^b

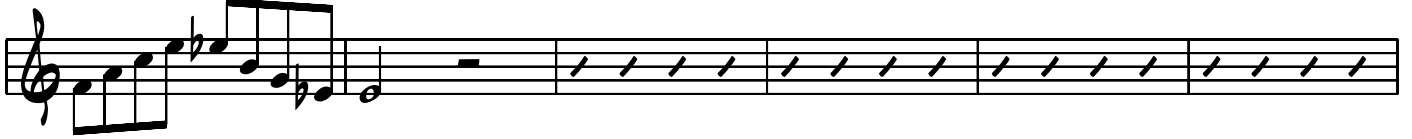
C#7 F# B7 E A7 D

A^b7 D^b F#7 B E7 A

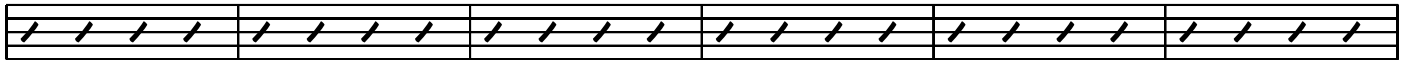
D7 G C7 F B^b7 E^b



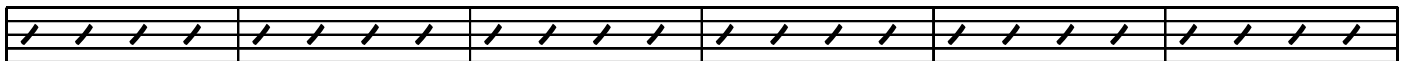
G7 C C7 F F7 B^b



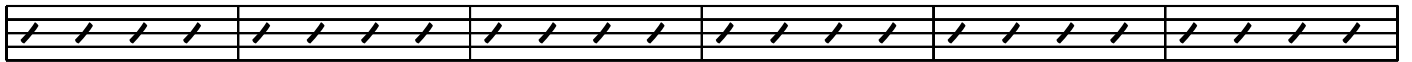
B^b7 E^b E^b7 A^b A^b7 D^b



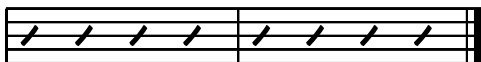
C[#]7 F[#] F[#]7 B B7 E



E7 A A7 D D7 G



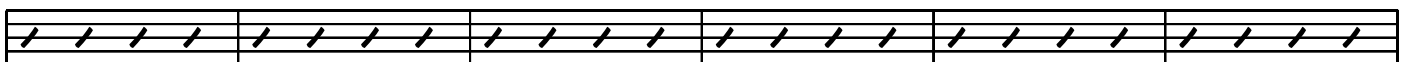
G7 C



G7 C C7 F F7 B^b



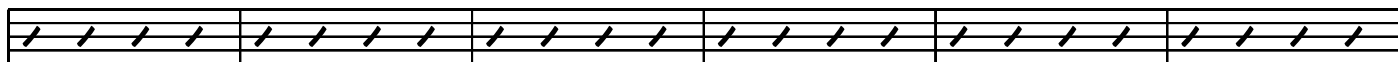
B^b7 E^b E^b7 A^b A^b7 D^b



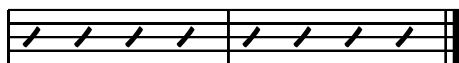
C#7 F# F#7 B B7 E



E7 A A7 D D7 G



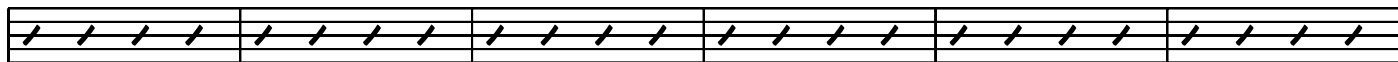
G7 C



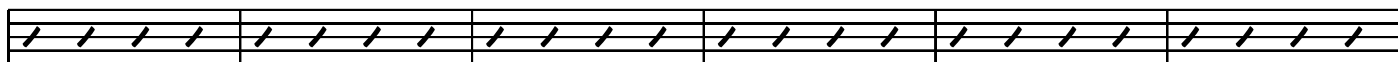
G7 C F#7 B F7 Bb



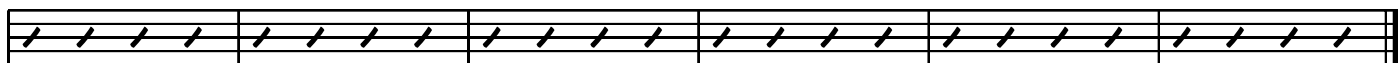
E7 A Eb7 Ab D7 G



C#7 F# C7 F B7 E



Bb7 Eb A7 D Ab7 Db



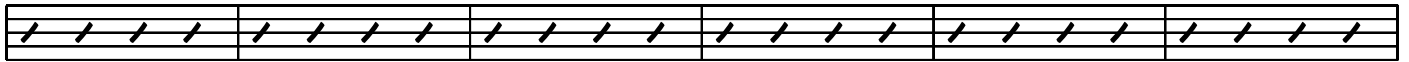
G7 C C7 F F7 Bb



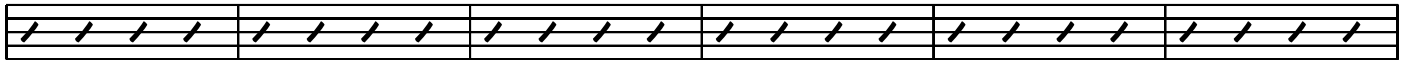
B^b7 E^b E^b7 A^b A^b7 D^b



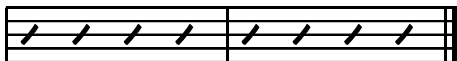
C[#]7 F[#] F[#]7 B B7 E



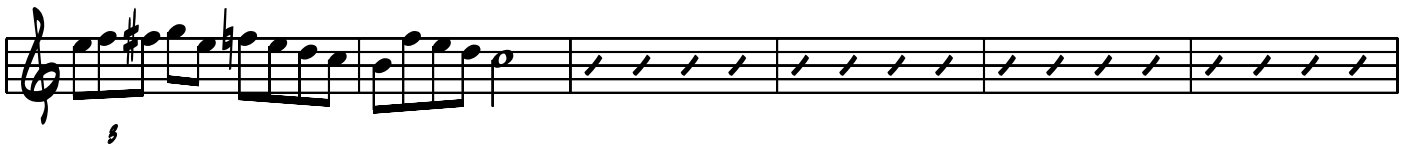
E7 A A7 D D7 G



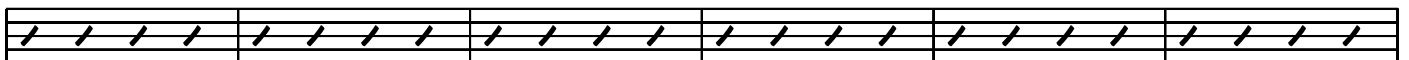
G7 C



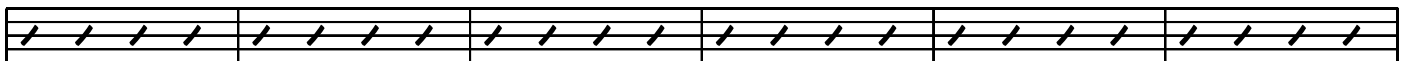
G7 C G[#]7 C[#] A7 D



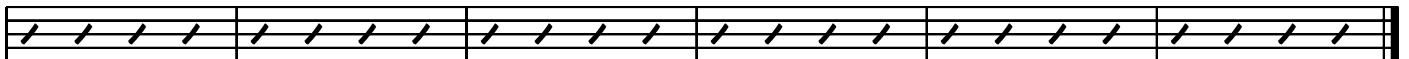
B^b7 E^b B7 E C7 F



C[#]7 F[#] D7 G E^b7 A^b



E7 A F7 B^b F[#]7 B



G7 C C7 F F7 B^b

B^b7 E^b E^b7 A^b A^b7 D^b

C[#]7 F[#] F[#]7 B B7 E

E7 A A7 D D7 G

G7 C

G7 C C7 F F7 B^b

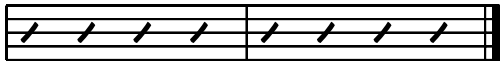
B^b7 E^b E^b7 A^b A^b7 D^b

C[#]7 F[#] F[#]7 B B7 E

E7 A A7 D D7 G



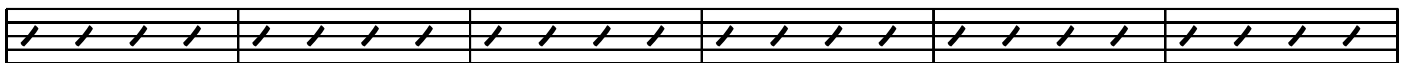
G7 C



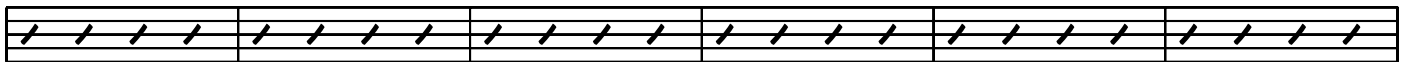
G7 C F7 Bb Eb7



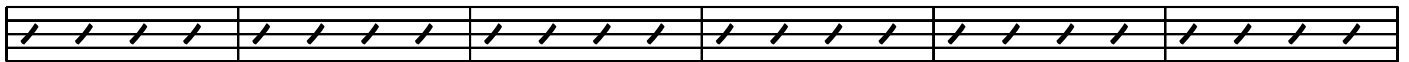
Ab C#7 F# B7 E A7



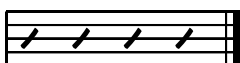
D Ab7 Db F#7 B E7



A D7 G C7 F Bb7



Eb



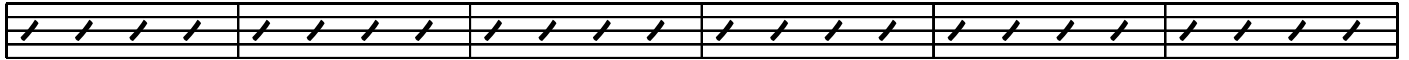
G7 C C7 F F7 Bb



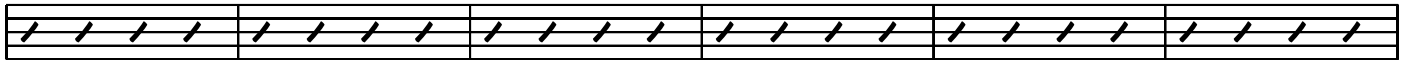
B^b7 E^b E^b7 A^b A^b7 D^b



C[#]7 F[#] F[#]7 B B7 E



E7 A A7 D D7 G



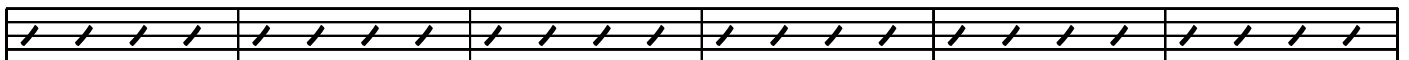
G7 C



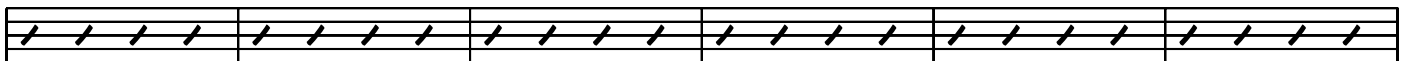
G7 C F7 B^b E^b7 A^b



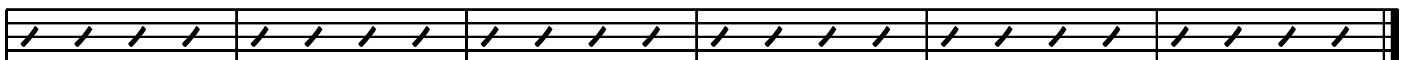
C[#]7 F[#] B7 E A7 D



A^b7 D^b F[#]7 B E7 A



D7 G C7 F B^b7 E^b



G7 C C7 F F7 Bb

Bb7 Eb Eb7 Ab Ab7 Db

C#7 F# F#7 B B7 E

E7 A A7 D D7 G

G7 C

G7 C C7 F F7 Bb

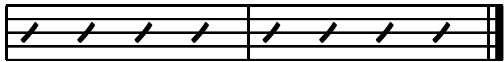
Bb7 Eb Eb7 Ab Ab7 Db

C#7 F# F#7 B B7 E

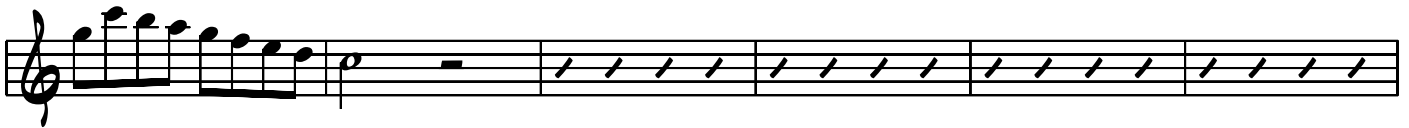
E7 A A7 D D7 G



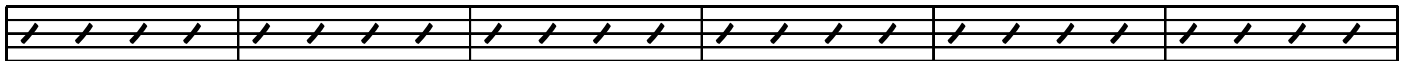
G7 C



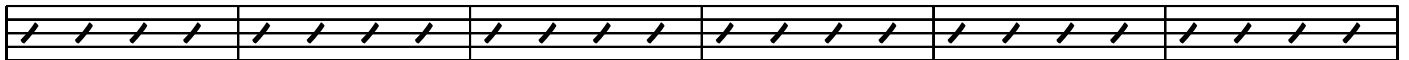
G7 C F7 Bb Eb7 Ab



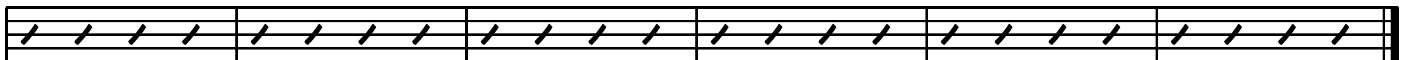
C#7 F# B7 E A7 D



Ab7 Db F#7 B E7 A



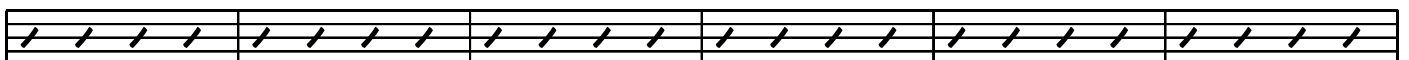
D7 G C7 F Bb7 Eb



G7 C F7 Bb Eb7



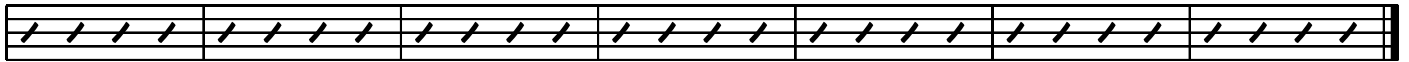
Ab C#7 F# B7 E A7



D A^b7 D^b F[#]7 B E7



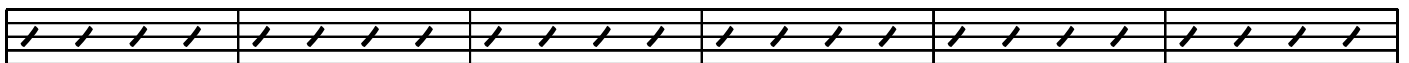
A D7 G C7 F B^b7 E^b



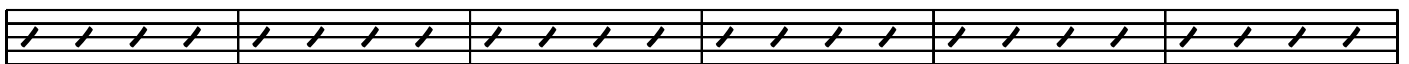
G7 C F7 B^b E^b7 A^b



C[#]7 F[#] B7 E A7 D



A^b7 D^b F[#]7 B E7 A



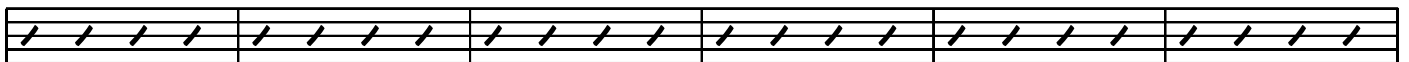
D7 G C7 F B^b7 E^b



G7 C F7 B^b E^b7 A^b



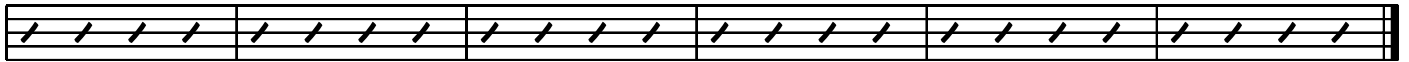
C[#]7 F[#] B7 E A7 D



A^b7 D^b F[#]7 B E7 A



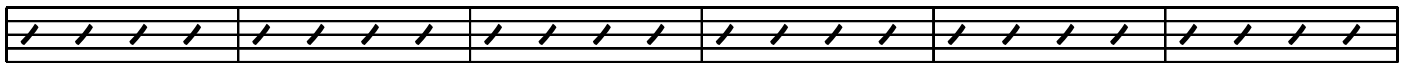
D7 G C7 F B^b7 E^b



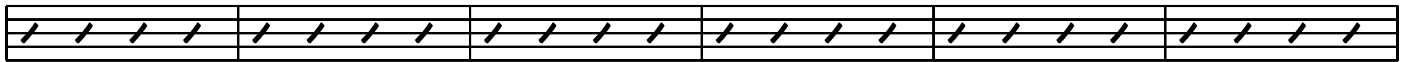
G7 F7 B^b E^b7 A^b



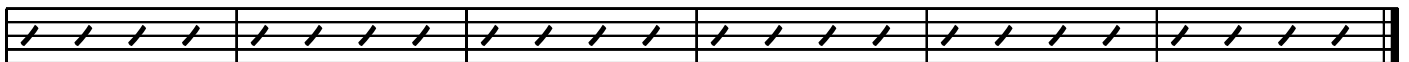
C[#]7 F[#] B7 E A7 D



A^b7 D^b F[#]7 B E7 A



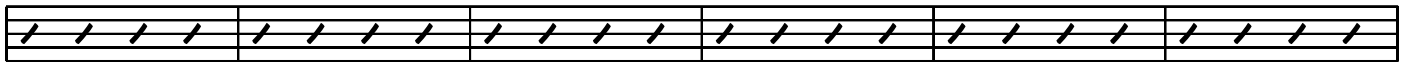
D7 G C7 F B^b7 E^b



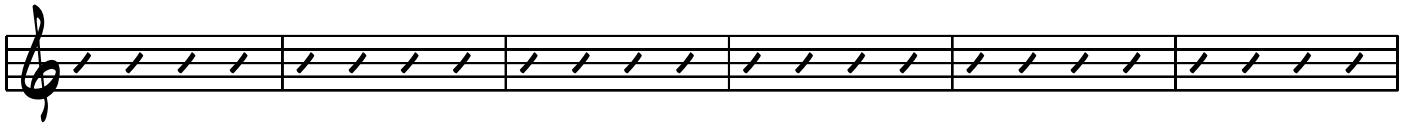
G7 C F7 B^b E^b7



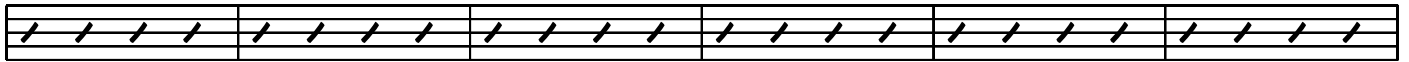
A^b C[#]7 F[#] B7 E A7



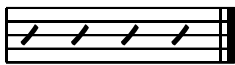
D A^b7 D^b F[#]7 B E7



A D7 G C7 F B^b7



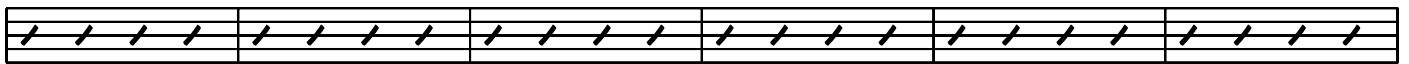
E^b



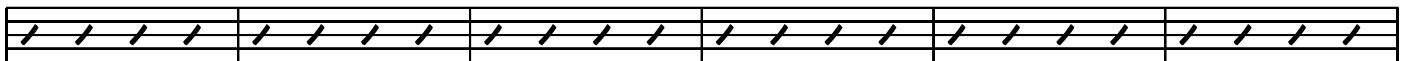
G7 C C7 F F7 B^b



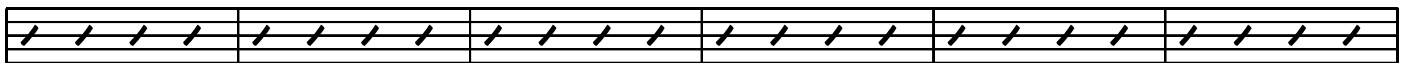
B^b7 E^b E^b7 A^b A^b7 D^b



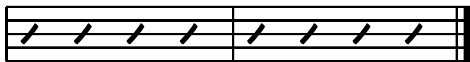
C[#]7 F[#] F[#]7 B B7 E



E7 A A7 D D7 G



G7 C



G7 C F#7 B F7 Bb

E7 A Eb Ab D7 G

C#7 F# C7 F B7 E

Bb7 Eb A7 D Ab Db

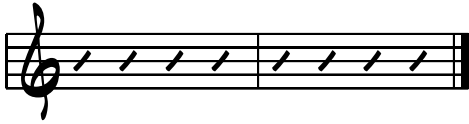
G7 C C7 F F7 Bb

Bb7 Eb Eb7 Ab Ab7 Db

C#7 F# F#7 B B7 E

E7 A A7 D D7 G

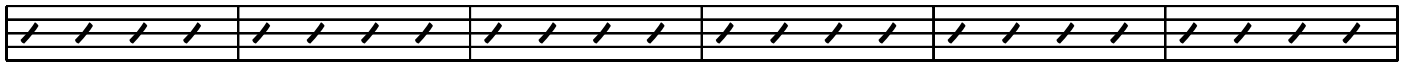
G7 C



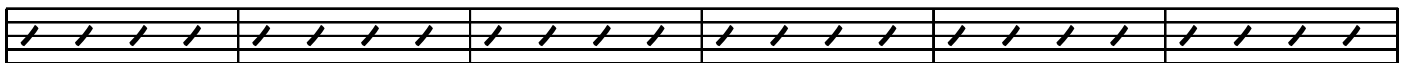
G7 C C7 F F7 Bb



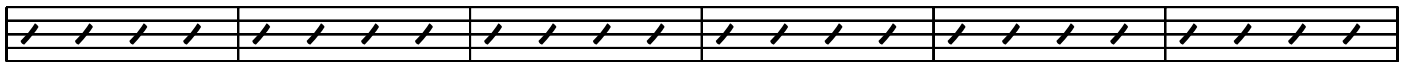
Bb7 Eb Eb7 Ab Ab7 Db



C#7 F# F#7 B B7 E



E7 A A7 D D7 G



G7 C

