

# Anytime

Words and Music by BRIAN MCKNIGHT  
and BRANDON BARNES

Moderately slow  
N.C.

*mf*

Bm9

D/G

Ooh, \_\_\_\_\_

Em7

Cmaj7

Bm9

D/G

mm. \_\_\_\_\_ Ah. \_\_\_\_\_

Em7

Cmaj7

N.C.

Bm9

D/G

I can't re-mem-ber why we fell \_\_\_\_\_ a - part \_\_\_\_\_

Original key: B $\flat$  minor. This edition has been transposed up one half-step to be more playable.

Em7(add4) Cmaj13 Bm9 D/G Em7(add4) Cmaj13

from some-thing that \_ was so \_ meant \_ to be, \_ yeah. \_

Bm9 D/G Em7(add4) Cmaj13

For - ev - er was the prom - ise in \_ our hearts. \_ Now

Bm9 D/G Em7(add4) Cmaj13 N.C.

more and more \_ I won - der where \_ you are. \_ Do I

Bm9 D/G Em7(add4) Cmaj13

ev - er cross \_ your mind \_ an - y-time? Do you

Bm9

D/G

Em7(add4)

Cmaj13



ev - er wake \_ up reach - ing out \_ for me? \_\_\_\_\_ Do I



Bm9

D/G

Em7(add4)

Cmaj13



ev - er cross \_ your mind \_\_\_\_\_ an - y-time? I miss \_



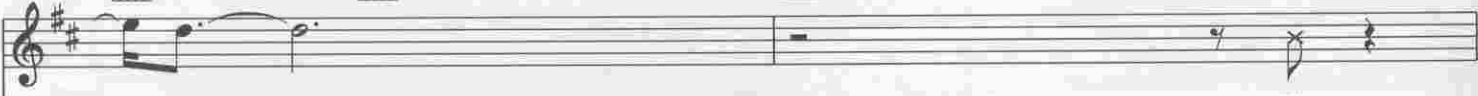
Bm9

D/G

Em7

Cmaj7

N.C.



\_\_\_\_\_ you. \_\_\_\_\_ Uh.



Bm9

D5/G

Em7(add4)

Cmaj13



Still have \_ your pic - ture in \_ a frame. \_\_\_\_\_ Mm. \_\_\_\_\_



Bm9                      D5/G                      Em7(add4)                      Cmaj13

Hear \_ your foot - steps down \_\_\_\_\_ the hall. \_\_\_\_\_

Bm9                      D/G                      Em7(add4)                      Cmaj13

I swear \_ I hear \_ your voice driv - ing me \_ in - sane. \_\_\_\_\_

Bm9                      D5/G                      Em7(add4)                      F#7

How \_ I wish \_ that you \_ would call \_\_\_\_\_ to say, \_\_\_\_\_ "Do I

Bm9                      D/G                      Em7(add4)                      Cmaj13

ev - er cross \_ your mind \_\_\_\_\_ an - y - time?" \_\_\_\_\_ Do you

Bm9

D/G

Em7(add4)

Cmaj13

Bm9

D/G

ev - er wake \_ up reach - ing out \_\_\_\_\_ for me? \_

Do I ev - er cross \_ your mind \_ an -

Em7(add4)

Cmaj13

Bm9

D/G

Em7

Cmaj7 N.C.

y - time? \_ I miss \_ you, \_

I miss \_

Bm9

D/G

Em7

Cmaj7

D

Bm9

D/G

\_ you. \_

I miss \_ you. (No \_ more) \_

Em7

Cmaj7

Bm9

D/G

Em7

Cmaj7

lone - li - ness \_ and heart - ache. \_ (No more) \_ cry - ing my - self \_ to sleep. \_ (No

3

3

Bm9

D/G

Em7

Cmaj13

more) — won-d'ring a - bout — to - mor - row. Won't you come

Bm9

D/G

Em7

Cmaj7

N.C.

back \_ to me? Come back \_ to me. — Oh. — Do I

Bm9

D/G

Em7(add4)

Cmaj13

ev - er cross \_ your mind — an - y-time? Do you

Bm9

D/G

Em7

Cmaj7

ev - er wake \_ up reach - ing out — for me? — Do I

Bm9 D/G Em7 Cmaj7 Bm9 D/G

ev - er cross your mind — an - y-time? I miss you. —

Detailed description: This system contains the first line of music. It features a vocal line in treble clef with lyrics and a piano accompaniment in grand staff. Above the vocal line, six guitar chords are indicated: Bm9, D/G, Em7, Cmaj7, Bm9, and D/G. The piano accompaniment consists of a right-hand melody and a left-hand bass line.

1 Em7 Cmaj7 N.C. 2 Em7 Cmaj7 N.C.

Do I I miss -

Detailed description: This system contains the second line of music. It features a vocal line in treble clef with lyrics and a piano accompaniment in grand staff. Above the vocal line, two first endings are marked with '1' and '2'. The chords for the first ending are Em7, Cmaj7, and N.C. The chords for the second ending are Em7 and Cmaj7, followed by N.C. The piano accompaniment continues with the right-hand melody and left-hand bass line.

Bm9 D/G Em7 Cmaj7 Repeat and Fade

— you. — I miss -

Detailed description: This system contains the third line of music. It features a vocal line in treble clef with lyrics and a piano accompaniment in grand staff. Above the vocal line, four guitar chords are indicated: Bm9, D/G, Em7, and Cmaj7. The instruction 'Repeat and Fade' is written above the final chord. The piano accompaniment concludes with the right-hand melody and left-hand bass line.

Optional Ending

Bm9 D/G Em7 Cmaj7 Bm9

— you. —

Detailed description: This system contains the optional ending. It features a vocal line in treble clef with lyrics and a piano accompaniment in grand staff. Above the vocal line, five guitar chords are indicated: Bm9, D/G, Em7, Cmaj7, and Bm9. The piano accompaniment concludes with the right-hand melody and left-hand bass line.