

Toto - I'll be over you

F Bb D#

4 1 1 1 1 1

1 2

Cm Gm F

1 1 3 1 1 1 1 1

3 4

Dm D#

1 1 3 0 1 1 1 1 1

5 6

Gm7 F Bbadd9 F

1 1 3 1 1 1 1 1 3

7 8

D#

3 3 1 1 1 1 1 1 1

9 10

Some people live their dreams

D# Cm

how our love must be Dont

21 22

D# Bb

ask why It

23 24

F/A F D#/G

takes some time God knows how long

25 26

F#6 F D/F#

I know that I can forget you As soon as my

27 28

Bb

heart stops breakin

29 30

Gm D# F

31 32

Anticipating

Cm D# Gm F D#maj7

33 34

As soon as forever is through Ill be over

Bb Bb F Bb

35 36

you Remembering times

D# D#add9 F

37 38 39

gone by Promises we once

Dm

40 41

made What are the reasons

D# Cm D# Bb

1 1 1 1 0 3 3 0 1 1 1 3 1

42 43

why Nothing stays the same

Cm7 Bb Dm F/A

1 0 4 1 2 2

44 45

There were the nights

F D#/G D# F#

2 2 3 3 3 3 2 2

46 47

holding you close Someday

F E Dm C#m F Bb

2 2 2 1 1 1 0 1 1 1 1

48 49

III try to forget them As soon as my heart

Bb Bb F Gm

1 1 1 1 1 1 1 1 1 0 3

50 51

stops breakin Anticipating

D#

Dm

Cm

52

53

Anticipating

As soon as

D#

F

D#

Bb

54

55

forever is

through

Ill be over

you

Bb/D

F

G#

F

56

57

G#

Gm

D#

58

59

F#

Bb

F

Dm

Gm

60

61

Bb D# E Bb

62 63

As soon as my heart stops

Bb F Gm

64 65

breakin Anticipating

D# Cm D#

66 67

Anticipating Someday III be over

F D Bb

68 69

you As soon as my heart stops

Gm

70 71

breaking Anticipating

D# Cm D#

72

73

Anticipating

Someday III be over

F C/E D F/A Bb

74

75

you

As soon as

my

heart

Gm D#

76

77

Cm D# F

78

79

80

Dm Cm Dm F/A Bb

81

82

F Gm

83 84

D# F Cm D# F

85 86

D Bb Gm Bb

87 88

Dm Bb Gm F Cm D#

89 90

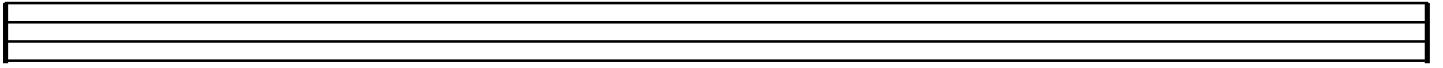
F Cm Em

91 92

C Em

C

Gm



93

94

F

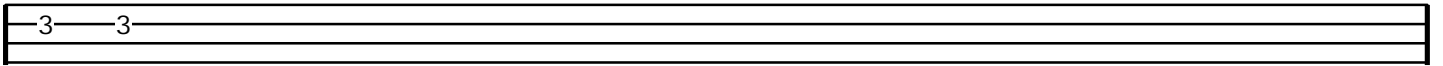
Cm

D#

Cm

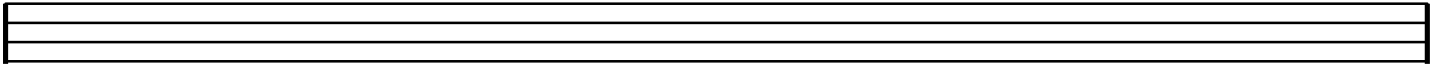
D#

Cm



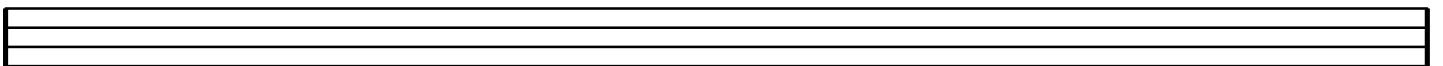
95

96



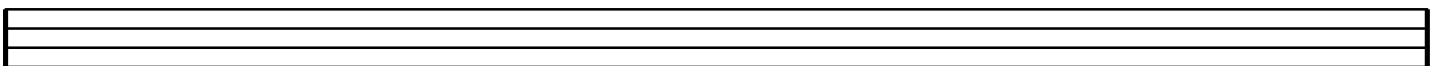
97

98



99

100



101

102

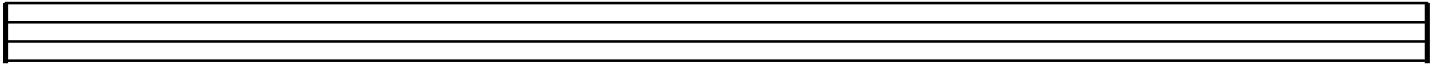
Two empty musical staves are shown above a horizontal baseline. Two vertical blue lines mark positions 103 and 104 on the baseline.

A musical staff contains a single note on the top line, labeled "Bb" above it. Below the staff, a horizontal baseline has two vertical blue lines marking positions 105 and 106.

A musical staff contains a sequence of eight notes, each marked with a "1" above it. Below the staff, a horizontal baseline has two vertical blue lines marking positions 107 and 108.

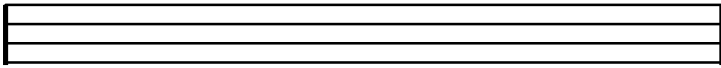
A musical staff contains a sequence of notes. The first note is marked "D#" above it. The next three notes are marked "Bb" above them. The next three notes are marked "D#" above them. The final note is marked "Bb" above it. Below the staff, a horizontal baseline has two vertical blue lines marking positions 109 and 110.

A musical staff contains two notes, each marked with a "1" above it. Below the staff, a horizontal baseline has two vertical blue lines marking positions 111 and 112.



113

114



115