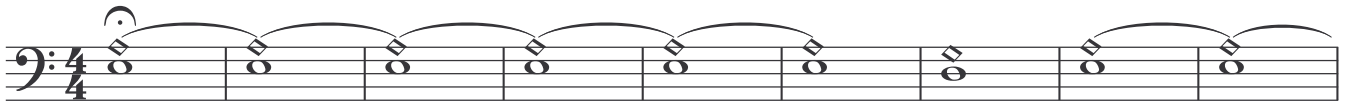


Violoncello 2

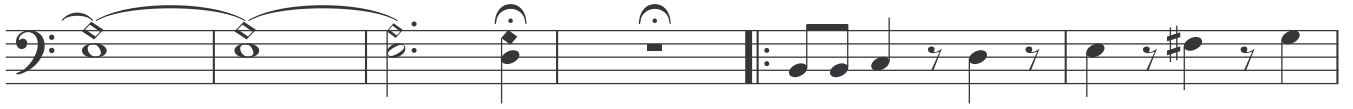
Harmageddon

Apocalyptica

♩ = 100



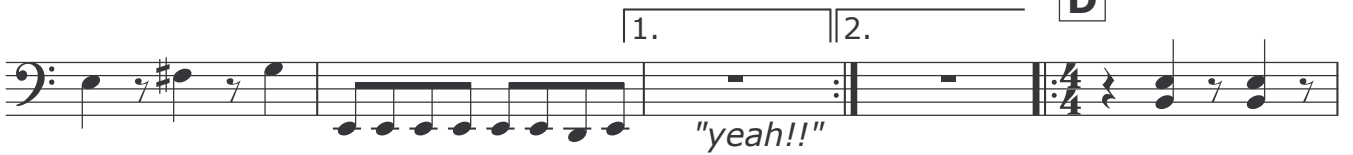
A ♩ = 200



B



D



rit.



E ♩ = 140



Violoncello 2

F

First line of musical notation for section F, featuring a bass clef and a series of eighth notes.

Second line of musical notation for section F, continuing the eighth-note pattern.

G

Musical staff for section G, starting with eighth notes and transitioning to a series of chords.

H

8x

Musical staff for section H, featuring a double bar line and a repeat sign, with the instruction '8x' above.

rit.

Second line of musical notation for section H, marked with 'rit.' and a dashed line above.

I

♩ = 125

First line of musical notation for section I, featuring a tempo marking '♩ = 125' and triplet markings.

Second line of musical notation for section I, continuing the triplet pattern.

J

♩ = ♩

Musical staff for section J, featuring a 4/4 time signature and a tempo marking '♩ = ♩'.

rit.

Second line of musical notation for section J, marked with 'rit.' and a dashed line above.

K ♩ = 140

Violoncello 2

3



L



M

4x

4x



rit. - - - - -



N ♩ = 190

3

3

3

3

