

Violoncello 1

baaaaaaaaaaaaaad romance...

lady gaga arr. sarah chaffee

1-5

*f*

Measures 1-5: Treble clef, 4/4 time signature. Measure 1 has a whole rest. Measures 2-5 contain eighth-note patterns with slurs and accents.

6-10

Measures 6-10: Treble clef, 4/4 time signature. Measure 6 starts with a half note. Measures 7-10 continue with eighth-note patterns. Measure 10 ends with a double bar line and repeat sign.

11-15

Measures 11-15: Bass clef, 4/4 time signature. Measures 11-15 contain eighth-note patterns with slurs and accents.

16-20

Measures 16-20: Bass clef, 4/4 time signature. Measure 16 starts with a half note. Measures 17-20 continue with eighth-note patterns. Measure 20 ends with a double bar line and repeat sign.

*mf*

21-26

Measures 21-26: Bass clef, 4/4 time signature. Measures 21-26 contain eighth-note patterns with slurs and accents.

27-31

Measures 27-31: Bass clef, 4/4 time signature. Measures 27-31 contain eighth-note patterns with slurs and accents.

32-36

Measures 32-36: Bass clef, 4/4 time signature. Measure 32 starts with a half note. Measures 33-36 contain eighth-note patterns with slurs and accents.

37-40

Measures 37-40: Bass clef, 4/4 time signature. Measure 37 starts with a half note. Measure 38 has a key signature change to 3 flats. Measures 39-40 continue with eighth-note patterns. Measure 40 ends with a double bar line and repeat sign.

*f*

41-45

Measures 41-45: Bass clef, 4/4 time signature. Measure 41 starts with a half note. Measures 42-45 contain eighth-note patterns with slurs and accents. Measure 45 ends with a sharp sign.

45



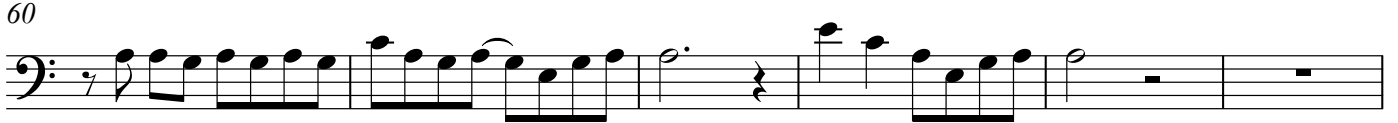
50



55



60



66



71



76

*f*

81



85



90



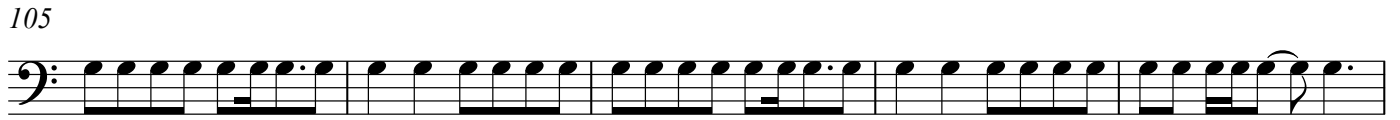
95



100



105



110



*p*

114



118



123 *mp*



*ff*

128



132



137



142



*f*

*gliss.*