

# 6. Little Cosette

Little COSETTE is working as a drudge  
in the THENARDIERS' inn at Montfermeil

Moderato  $\text{♩} = 56$

Flt. Clar.

mp

This system shows the beginning of the piece for Flute and Clarinet. The music is in 3/4 time with a key signature of one flat. The tempo is Moderato with a quarter note equal to 56 beats per minute. The dynamic marking is mezzo-piano (mp). The Flute part features a melodic line with eighth-note patterns, while the Clarinet provides a harmonic accompaniment.

Ob., Str.

This system continues the music for Oboe and Stripes. The Oboe part has a similar melodic character to the Flute, with eighth-note runs. The Stripes part provides a steady accompaniment with quarter notes and rests.

Flt., Clar.

This system continues the music for Flute and Clarinet. The Flute part has a more active role with sixteenth-note passages. The Clarinet part continues its accompaniment. The dynamic remains mezzo-piano.

This system continues the music for Flute and Clarinet. The Flute part features a melodic line with eighth-note patterns. The Clarinet part provides a harmonic accompaniment. The dynamic remains mezzo-piano.

This system continues the music for Flute and Clarinet. The Flute part has a melodic line with eighth-note patterns. The Clarinet part provides a harmonic accompaniment. The dynamic remains mezzo-piano.

# A

COSETTE

There is a cast - le on a cloud, I like to go there in my sleep,  
There is a room that's full of toys, There are a hundred boys and girls,

1.

Aren't any floors for me to sweep, Not in my castle on a cloud.  
Nobody shouts or talks too loud, Not in my castle on a

# 2. ——— B

2.

cloud. There is a la - dy all in white, Holds me and sings a lullaby, She's

+ Flc, etc.

rall.

nice to see and she's soft to touch, She says: "Cosette, I love you very much".

colla voce

## C

Cos

I know a place where no one's lost, I know a place where no one cries

*rall.*

Cos

Crying at all is not allowed, Not in my castle on a cloud.

## D Recitative - Allegro

Cos

Oh help, I think I hear them now And I'm nowhere near finished sweeping

Cos

and scrubbing and polishing the floor. Oh, it's her - It's Madame!

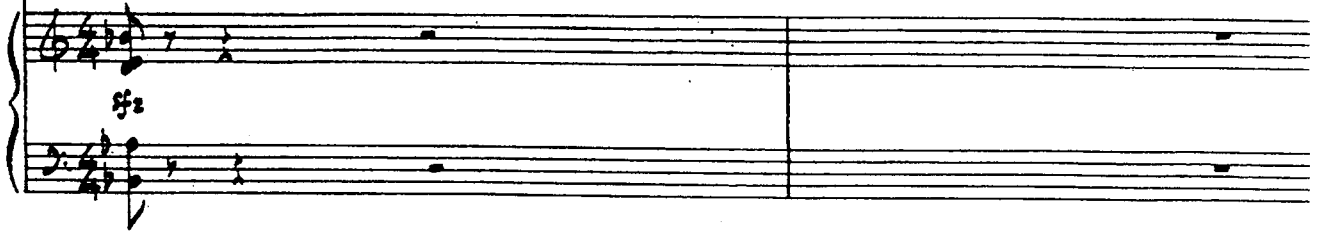
*f*  
Hns, Tbn

# E

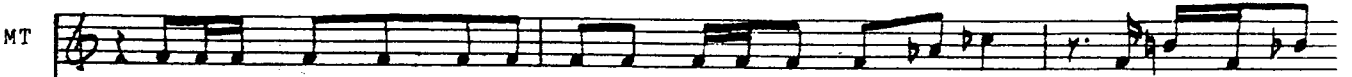
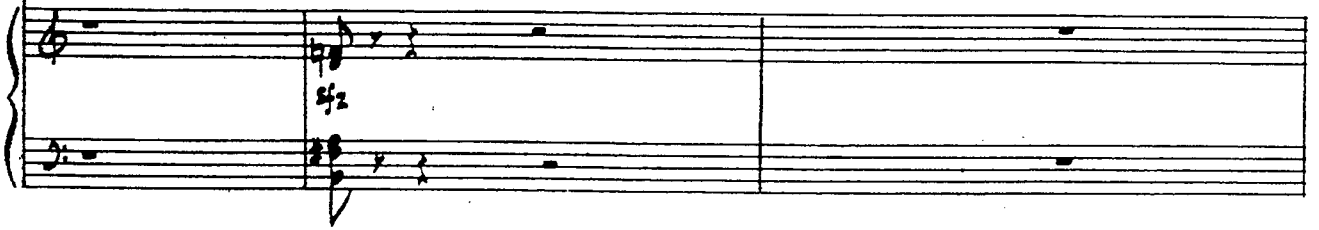
MADAME THENARDIER *rushing in*, followed by little EPONINE



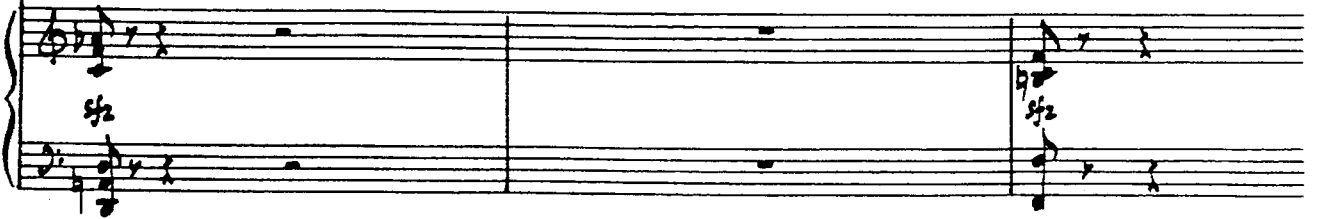
Now look who's here, The little Madam herself, Pretending once again she's been so



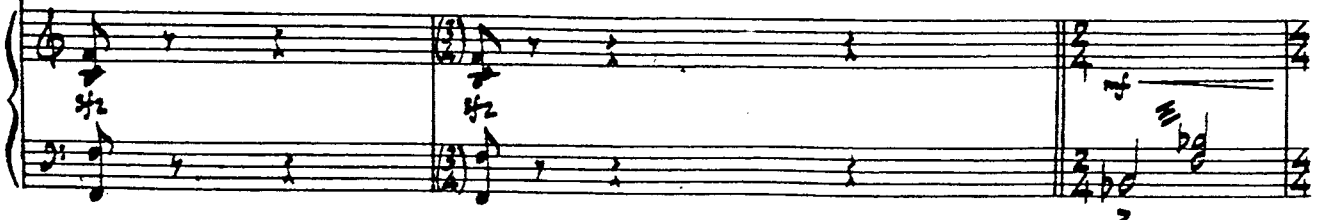
awfully good. Better not let me catch you slacking, Better not catch my eye.



Ten rotten francs your mother sends me, What is that going to buy? Now take that pail,



My little Mademoiselle, And go and draw some water from the well!



*Scr.*  
**F** Allegro pesante  
(*dad*)  $\text{♩} = 120$

MT

We should never have taken you in in the first place, how stupid the things that we

*Sim.*

Detailed description: This system contains a vocal line (MT) and piano accompaniment. The vocal line is in treble clef with a key signature of one flat and a 4/4 time signature. The piano accompaniment consists of two staves, with the right hand playing chords and the left hand playing a simple bass line. The lyrics are positioned below the vocal line.

MT

do, like mother like daughter, the scum of the street! Epo -

*Piu mosso*

Detailed description: This system continues the vocal line and piano accompaniment. The tempo marking *Piu mosso* is placed above the vocal line. The piano accompaniment features a more active right hand with sixteenth-note patterns. The lyrics are positioned below the vocal line.

MT

- nine, come my dear, Eponine let me see you, You look very well in that little blue hat.

*Sim.*

Detailed description: This system continues the vocal line and piano accompaniment. The tempo marking *Sim.* is placed below the piano accompaniment. The piano accompaniment features a more active right hand with sixteenth-note patterns. The lyrics are positioned below the vocal line.

MT

There's some little girls who know how to be -

*Tp's, Hrs.*

*Tbn.*

Detailed description: This system continues the vocal line and piano accompaniment. The tempo marking *Tp's, Hrs.* is placed above the piano accompaniment, and *Tbn.* is placed below it. The piano accompaniment features a more active right hand with sixteenth-note patterns. The lyrics are positioned below the vocal line.

MT  
- have and they know what to wear and I'm saying 'Thank heaven for that'.

G Recitative

MT  
Still there, Cosette? Your tears will do you no good. I told you, fetch some

Moderato  $\text{♩} = 112$

COSETTE

MT  
Please do not send me out a-lone,  
water from the well in the wood.

Fit, Cut.

# H Recitative

Cos *Not in the darkness on my own.*

MT *Enough of that, Or I'll forget to be nice.*

Br.

MT *You heard me ask for something and I ne - ver ask twice.*

EPONINE pushes COSETTE out

THENARDIER says goodnight to his daughter as the inn fills up for the evening.

*Allegro*  $\text{♩} = 120$

Br., W.W.

Long Slide