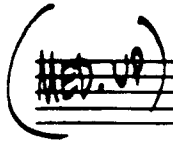


JUMP MONK

CHARLES MINGUS



(REPEAT UNTIL CUE:)

Musical score for "Jump Monk" by Charles Mingus. The score consists of ten staves of music. The first staff is a treble clef staff with a key signature change from G major to F major (one flat). The second staff is a bass clef staff with a key signature change from F major to E-flat major (two flats). The score includes various musical notations such as notes, rests, and bar lines. Chord symbols are written below the staves, including F-, Db7, G-7b5, C7, F-7, Eb7 sus4, Db7, C+7, Bb-7, Ab7, G-7b5, 1. Gb7, 2. Gb7 F7, Bb-6, C-7b5, F+7, Bb-6, Bb-(maj7), C-7b5, and F+7. There are also some handwritten annotations like "(sub)" and "sus4".

