

Come, Receive Christ

Christopher Walker

SAB, Descant

Keyboard, Guitar, Solo Instrument

The material that you have requested is copyrighted. Copyright law requires you to obtain a license from the copyright holder before reproducing any copyrighted material. Copyright law also requires you to print copyright lines with all reproductions of copyrighted material. Oregon Catholic Press administers the copyright to this text and music that you have requested. You are hereby granted a license by Oregon Catholic Press to reprint this text and music.

OCP Choral Series

Come, Receive Christ

for Phyllis Wayne

Assembly, Descant, SAB Choir, Keyboard, Guitar, and Solo Instrument

Christopher Walker

INTRO *Peacefully* (♩ = ca. 96)

Keyboard

Chords: G, Am7, G/B, C, D7

Tempo: *Peacefully* (♩ = ca. 96)

Dynamics: *mp*

© 2006, Christopher Walker. Published by OCP, 5536 NE Hassalo, Portland, OR 97213. All rights reserved.

REFRAIN

Descant

mp (a tempo)

Come to the ta - ble pre - pared for you. Come with a heart that is

Soprano/All

mp (a tempo)

Come to the ta - ble pre - pared for you. Come with a heart that is

Alto

mp (a tempo)

Baritone

mp (a tempo)

G Am7 G/B Cmaj7 Bm7 Em

mf

hum - ble and true. Come and be filled; with faith a - new

mf

hum - ble and true. Come and be filled; with faith a - new

mf

hum - ble and true. Come and be filled; with faith a - new

mf

Am7 D D/C G/B Em C

mp 1-4 to Verses

come, re - ceive Christ giv - en for you.

mp 1-4 to Verses

come, re - ceive Christ giv - en for you.

mp Am7 G/B Am7 1-4 G Em/G Am7 to Verses

mp

Final *rit.* *Fine*

you. Come, re - ceive Christ giv - en for you.

Final *rit.* *Fine*

you. Come, re - ceive Christ giv - en for you.

rit.

Final Em Em/D C G/B Am G *Fine*

rit.

VERSES

rit. *mp* *a tempo*

1. Lord Je - sus, re - ceive us who come to your ta - ble,
 2. Lord hear us, be near us when trou - bles as - sail us.
 3. Lord feed us and lead us in ways ev - er - last - ing.
 4. Be - side us, Lord, guide us to serve one an - oth - er,

Dsus4 D G Bm7 Am7 C/D D

rit. mp *a tempo*

1. faith - ful dis - ci - ples who yearn to be fed. _____ Lord
 2. Strength - en the wea - ry, the fright - ened, the lost. _____ Lord,
 3. Be our com - pan - ion each day of our lives. _____ Lord,
 4. car - ing for neigh - bor, for strang - er, and friend _____ be -

G Em C Bm7

rit. *D.S.*

1. Je - sus, _____ re - ceive us. _____
 2. hear us, _____ be near us. _____
 3. feed us, _____ and lead us. _____
 4. side us, _____ Lord, guide us. _____

Esus4 Em Am D7 *D.S.*

rit.

Come, Receive Christ

SOLO INSTRUMENT

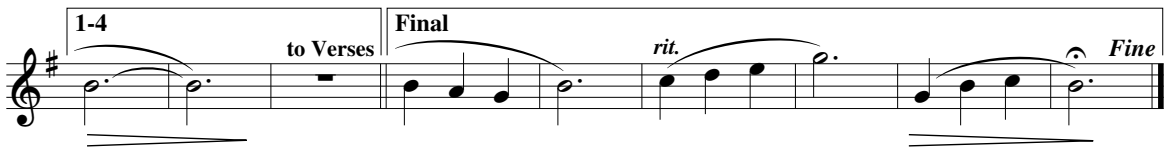
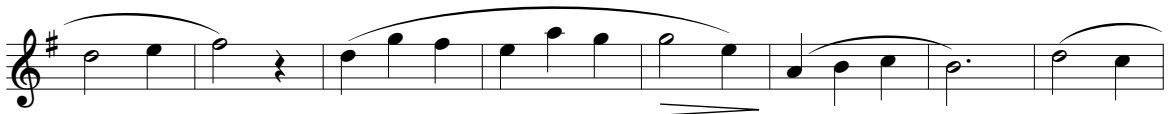
Christopher Walker

INTRO *Peacefully* (♩ = ca. 96)

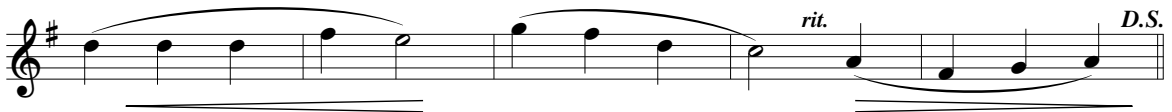


REFRAIN

(*a tempo*)



VERSES



© 2006, Christopher Walker. Published by OCP, 5536 NE Hassalo, Portland, OR 97213. All rights reserved.

Composer Notes

“Come, Receive Christ” may be sung during communion at any mass during Ordinary Time, or even during Lent. It is also suitable for masses celebrating discipleship, mission, or outreach.

Do not take it too fast. Encourage your assembly to sing the refrain and let the choir or cantor sing the verses. Make sure that the first beat of each bar in the verses sounds stronger than the second beat. If there are many people coming forward for communion play an occasional verse on a melodic instrument. Use the descant and instrumental parts to add color, rather than playing and singing them continuously.

—Christopher Walker

Come, Receive Christ

for Phyllis Wayne

(Guitar/Vocal)

Christopher Walker

INTRO Peacefully (♩ = ca. 96)

G Am7 G/B C D7

mp

(Keyboard)

REFRAIN

Descant

mp (a tempo)

Come to the ta - ble pre - pared for you. Come with a heart that is

Melody

mp (a tempo)

Come to the ta - ble pre - pared for you. Come with a heart that is

mf

hum - ble and true. Come and be filled; with faith a - new

mf

hum - ble and true. Come and be filled; with faith a - new

mp

come, re - ceive Christ giv - en for you.

mp

come, re - ceive Christ giv - en for you.

Final

you. _____ Come, re - ceive Christ giv - en for you.

Final

Em Em/D C G/B Am G

you. _____ Come, re - ceive Christ giv - en for you.

VERSES

Dsus4 D G Bm7 Am7 C/D D

1. Lord Je - sus, re - ceive us who come to your ta - ble,
 2. Lord hear us, be near us when trou - bles as - sail us.
 3. Lord feed us and lead us in ways ev - er - last - ing.
 4. Be - side us, Lord, guide us to serve one an - oth - er,

G Em C Bm7

1. faith - ful dis - ci - ples who yearn to be fed. _____ Lord
 2. Strength - en the wea - ry, the fright - ened, the lost. _____ Lord,
 3. Be our com - pan - ion each day of our lives. _____ Lord,
 4. car - ing for neigh - bor, for strang - er, and friend _____ be -

Esus4 Em Am D7

1. Je - sus, _____ re - ceive us. _____
 2. hear us, _____ be near us. _____
 3. feed us, _____ and lead us. _____
 4. side us, _____ Lord, guide us. _____

Assembly Edition

COME, RECEIVE CHRIST

Christopher Walker

Refrain



Verses



to Refrain

© 2006, Christopher Walker. Published by OCP, 5536 NE Hassalo, Portland, OR 97213. All rights reserved.

We are pleased to grant permission to reprint the assembly edition enclosed in the box at no charge for the special celebrations of ordination, religious profession, first Mass or funeral. Reprints must include title, composer's name and full copyright notice as it appears above. If not kept as a souvenir, copies must be destroyed after use. For all other uses please contact: OCP Reprint Permission, 1-800-LITURGY.